



SURBITON

HIGH SCHOOL

Safeguarding Children and Child Protection Policies and Procedures

Review.....	2
Key external contact details.....	2
Key School contact details	3
Policy Statement	6
Concerns about a child.....	7
Procedures for dealing with concerns about a child	8
Child-on-child abuse (including sexual violence and sexual harassment)	14
Safeguarding concerns and allegations made about staff, including supply teachers, volunteers and contractors	20
Concerns that do not meet the harm threshold/Low-level Concerns Policy	24
Staff Behaviour Policy / Code of Conduct.....	29
Management of Safeguarding	30
Training	31
Oversight of safeguarding, including arrangements for reviewing policies and procedures	33
The School's arrangements to fulfil other safeguarding responsibilities	33
Early Years provision safeguarding arrangements	37
Appendix 1 – Further information	40
Appendix 2 – Meet the safeguarding team	54
Appendix 3 – Safeguarding training log	57
Appendix 4 – Staff/student relationship letter and guidance notes	60
Appendix 5 – Flowchart for reporting a concern.....	63
Appendix 6 – Working Together to Safeguard Children (HM Government, 2023)	64



SURBITON

HIGH SCHOOL

Review

Date of last central office review:	July 2023	Review Period:	1 year (minimum)
Date of next central office review:	July 2024	Owner:	Kavita Patel
Ad hoc School review:	Feb 2024 Addition of Appendix 6		
Date of next School level review:	August 2024		
Type of policy:	United Learning Policy	Local Governing Body	Recommends School policy for Group Board approval
		Group Board:	Group Board approves United Learning Policy

REVIEW TIMETABLE

The Policy will be reviewed annually, as set out below:	
Policy reviewed centrally	July 2023
Policy tailored by individual schools	August 2023
Policy ratified by Local Governing Bodies	November 2023 (TBC)
Policy approved by the Group Board	July 2023
Implementation of Group Policy	1 st September 2023

Key external contact details

Local Authority Designated Officer	Lorissa Webber Julie Fisher Jacqueline Alsop TEL: 07774 332675 EMAIL: lado@achievingforchildren.org.uk
Local Authority Children's Social Services	TEL: 0208 547 5008 EMAIL: lscb-support@kingrichlscb.org.uk OUT-OF-HOURS EMERGENCY DUTY TEAM TEL: 0207 770 5000
Multi-Agency Safeguarding Hub	TEL: 0208 547 5008 EMAIL: lscb-support@kingrichlscb.org.uk
Support and Advice about Extremism	Police PC Emily Brooker TEL: 07917 072816 EMERGENCY: 999 NON-EMERGENCY NUMBER: 101



SURBITON

HIGH SCHOOL

	<p>EMAIL: emily.l.brooker@met.police.uk</p> <p>Local Authority Kingston Upon Thames TEL: 0208 547 5039 EMAIL: lscb-support@kingrichlscb.org.uk PREVENT LEAD: Marion Todd</p> <p>Department for Education NON-EMERGENCY NUMBER: 020 7340 7264 EMAIL: counter.extremism@education.gov.uk CONTACT FORM: https://report-extremism.education.gov.uk/</p>
NSPCC's what you can do to report abuse dedicated helpline	<p>TEL: 0808 800 5000 EMAIL: help@nspcc.org.uk</p>
Disclosure and Barring Service	<p>Disclosure Service ADDRESS: DBS customer services, PO Box 3961, Royal Wootton Bassett, SN4 4HF, United Kingdom TEL: 03000 200 190 EMAIL: customerservices@dbb.gov.uk</p> <p>Barring Service ADDRESS: DBS customer services, PO Box 3961, Royal Wootton Bassett, SN4 4HF, United Kingdom TEL: 03000 200 190</p>
Teaching Regulation Agency	<p>TEL: 0207 593 5393 EMAIL: misconduct.teacher@education.gov.uk</p>
OFSTED (Concerns)	<p>TEL: 0300 123 4666 EMAIL: CIE@ofsted.gov.uk</p>

Key School contact details

United Learning Trust (ULT)	<p>Chair of UCST Ros Given-Wilson EMAIL: company.secretary@unitedlearning.org.uk</p> <p>Head of Safeguarding Darran Ellison-Lee, Director of Primary Education TEL: 07713 491000 EMAIL: Darran.Ellison-Lee@unitedlearning.org.uk</p> <p>Acting Head of Independent Schools Fiona Boulton TEL: 01832 864506 EMAIL: fjboulton@guildfordhigh.co.uk</p>
------------------------------------	--



SURBITON

HIGH SCHOOL

	<p>Director of Safeguarding (United Learning) Frazer Smith TEL: 07826934336 EMAIL: frazer.smith@unitedlearning.org.uk</p>
Local Governing Body (LGB)	<p>Chair of LGB Ade McKeon EMAIL: ade.mckeon@surbitonhigh.com</p> <p>Nominated Safeguarding Governor of LGB Gerry Holden EMAIL: gerry.holden@surbitonhigh.com</p> <p>Nominated E-Safety Governor of LGB Gerry Holden EMAIL: gerry.holden@surbitonhigh.com</p>
Designated Safeguarding Lead (DSL) and Deputy Designed Safeguarding Leads (DDSLs)	<p>Main DSL for the School Jon Owen TEL: 0208 546 5245 Out of hours: 020 8439 1505 EMAIL: jon.owen@surbitonhigh.com</p> <p>Deputy DSL Sinead Ross-Martyn TEL: 0208 546 5245 EMAIL: Sinead.RossMartyn@surbitonhigh.com</p> <p>Assistant DSL Senior School Stuart Murphy TEL: 0208 546 5245 EMAIL: stuart.murphy@surbitonhigh.com</p> <p>Assistant DSL Senior School Garnette Watts TEL: 0208 546 5245 EMAIL: garnette.watts@surbitonhigh.com</p> <p>DSL and EYFS DSL Boys' Prep Sally Johnston TEL: 0208 546 5245 EMAIL: sally.johnston@surbitonhigh.com</p> <p>Assistant DSL Boys' Prep Tracey Chong TEL: 0208 546 5245 EMAIL: tracey.chong@surbitonhigh.com</p>



SURBITON

HIGH SCHOOL

	<p>DSL Girls' Prep David Williams TEL: 0208 546 5245 EMAIL: david.williams@surbitonhigh.com</p> <p>Assistant DSL and EYFS DSL Girls' Prep Rosanna Palmer TEL: 0208 546 5245 EMAIL : rosanna.palmer@surbitonhigh.com</p> <p>Assistant DSL Girls' Prep Lousie McCabe-Arnold TEL: 0208 546 5245 EMAIL : louise.mccabearnold@surbitonhigh.com</p> <p>Designated E-Safety Lead Stuart.murphy@surbitonhigh.com TEL: 0208 546 5245 EMAIL: stuart.murphy@surbitonhigh.com</p>
Designated Teachers for Looked After Children	<p>Jon Owen TEL: 0208 546 5245 EMAIL: jon.owen@surbitonhigh.com</p>
Head/Principal	<p>Rebecca Glover TEL: 0208 546 5245 EMAIL: Rebecca.glover@surbitonhigh.com</p>



SURBITON

HIGH SCHOOL

Policy Statement

This policy applies to Surbiton High School (“the School”) which includes the EYFS setting. United Learning Trust requires the School’s Local Governing Body to review and update this policy annually (as a minimum). This policy is available on the School website. This policy is ratified annually by the United Learning Group Board.

This policy has regard to the following guidance and advice, as amended from time to time (and any supplemental guidance/advice referred to therein):

- Keeping Children Safe in Education (DfE, 2023)
- Disqualification under the Childcare Act 2006 (August 2018)
- What to do if you're worried a child is being abused: advice for practitioners (HM Government, 2015)
- UKCIS Sharing nudes and semi-nudes: advice for education settings working with children and young people (December 2020)
- Mental Health and Behaviour in Schools (DfE, November 2018)
- Preventing and Tackling Bullying (DfE, July 2017)
- Working Together to Safeguard Children (Current edition/publication)
- Information sharing: advice for practitioners providing safeguarding services to children, young people, parents and carers (HM Government, July 2018)
- Revised Prevent Duty Guidance: for England and Wales (Home Office, April 2021)
- Protecting children from radicalisation: the prevent duty - Guidance for schools and childcare providers on preventing children and young people from being drawn into terrorism (DfE, updated August 2015)
- Relationships education, relationships and sex education (RSE) and health education (DfE, updated September 2021)
- Statutory Framework for the Early Years Foundation Stage (DfE, updated September 2021)
- The Independent School Standards (DfE, 2019)
- Equality Act (2010)
- The Human Rights Act (1998)

This policy also takes into account the procedures and practice of Kingston Upon Thames local authority and the published safeguarding arrangements set out by the [Kingston and Richmond Safeguarding Partners](#). The Local Governing body and its Senior Leadership Team, especially their designated safeguarding leads, will:

- make themselves aware of and follow their local arrangements (including the local criteria for action and the local protocol for assessment)
- ensure this is reflected in their own policies and procedures
- supply information as requested by the three safeguarding partners
- work with social care, the police, health services and other services to promote the welfare of children and protect them from harm

Safeguarding and promoting the welfare of children is **everyone’s** responsibility. **Everyone** who comes into contact with children and their families has a role to play. In order to fulfil this responsibility effectively, all practitioners should make sure their approach is child centred. This means that they should consider, at all times, what is in the **best interests** of the child. If children



SURBITON

HIGH SCHOOL

and families are to receive the right help at the right time, **everyone** who comes into contact with them has a role to play in identifying concerns, sharing information and taking prompt action.

The School will ensure they facilitate a whole-school approach to safeguarding. This means ensuring safeguarding and child protection are at the forefront and underpin all relevant aspects of process and policy development. Staff working with children should have an attitude of '**it could happen here**' and no reports in their school it does not mean it is not happening. Ultimately, all systems, processes and policies should operate with the best interests of the child at their heart. Where there is a safeguarding concern, the School will ensure the child's wishes and feelings are taken into account when determining what action to take and what services to provide. Systems are in place for children to express their views and give feedback.

Concerns about a child

The School always has a duty to consider the best interests of the student and take action to enable all students to achieve the best outcomes. Safeguarding and promoting the welfare of children is **everyone's** responsibility. Everyone has a role to play in identifying concerns, sharing information and taking prompt action in accordance with this policy.

The School has arrangements for listening to children and providing early help and processes for children to raise concerns about themselves or their peers. Details of these arrangements can be found on the 'Whom can I talk to?' poster displayed on Form notice boards, Head of Year noticeboards, all toilet doors and in the Welfare Centre. In addition, each year pupils are reminded of who they can talk to via a PSHE session.

Staff should expect to support social workers and other agencies following any referral.

Where there are concerns related to incidents taking place when a third-party organisation (or individual) is using the School's premises e.g. community groups, sports associations etc. these should be reported to the School's DSL using the usual safeguarding procedures. The School's DSL will also refer these concerns to the Local Authority Designated Safeguarding Officer (LADO).

Definitions of Safeguarding and Types and Signs of Abuse

Safeguarding and promoting the welfare of children is defined as protecting children from maltreatment; preventing impairment of children's mental and physical health or development; ensuring that children grow up in circumstances consistent with the provision of safe and effective care; and taking action to enable all children to have the best outcomes.

Abuse is a form of maltreatment of a child. Somebody may abuse, exploit, or neglect a child by inflicting harm or by failing to act to prevent harm. Children may be abused in a family or in an institutional or community setting by those known to them, by other children, or, more rarely, by others (e.g. via the internet).

Technology is a significant component in many safeguarding and well-being issues. Abuse can take place wholly online, or technology may be used to facilitate offline abuse. In many cases abuse will take place concurrently via online channels and in daily life. They may be abused by an adult or adults or by another child or children. Abuse can be:



SURBITON

HIGH SCHOOL

- physical abuse
- emotional abuse
- sexual abuse; and/or
- neglect.

All staff should be aware of indicators of abuse and neglect. Staff are referred to **Appendix 1** of this policy for further detail of the types of abuse and possible signs of abuse. Staff should always be vigilant and raise any concerns with the DSL or DDSL.

Procedures for dealing with concerns about a child

All staff should be aware that children may not feel ready or know how to tell someone that they are being abused, exploited, or neglected, and/or they may not recognise their experiences as harmful. For example, children may feel embarrassed, humiliated, or being threatened. This could be due to their vulnerability, disability and/or sexual orientation or language barriers. This should not prevent staff from having a professional curiosity and speaking to the DSL if they have concerns about a child.

If staff suspect or hear an allegation or concern of abuse or neglect from a child or any third party, they must follow the relevant procedure below. All staff should:

- allow the pupil to speak freely and lead the discussion; never stop a pupil who is freely recalling significant events and do not press for details by asking questions, e.g. “What did they do next?”;
- remain calm and do not overreact – the pupil may stop talking if he or she feels that he or she is upsetting you;
- listen and be supportive - give reassuring nods or words of comfort e.g. ‘I’m so sorry this has happened’, ‘I want to help’, ‘This isn’t your fault’, ‘You are doing the right thing in talking to me’;
- accept what the pupil says without challenge — reassure him or her that he or she is safe, that he / she is doing the right thing and that you recognise how hard it is for him / her;
- do not admonish the pupil for not disclosing earlier. Saying ‘I do wish you had told me about this when it started’ or ‘I can’t believe what I’m hearing’ may be your way of being supportive but the pupil may interpret it that he / she has done something wrong;
- do not be afraid of silences – remember how hard this must be for the pupil;
- Never ask investigative questions – don’t put words in the pupil’s mouth, or ask leading questions such as ‘How many times this has happened?’ ‘Does it happen to siblings too?’, or ‘What does your mother think about all this?’;
- don't investigate – but you may use questions such as, ‘Is there anything else you'd like to tell me?’;
- do not offer any physical touch as comfort - it may be anything but comforting to a child who has been abused;
- do not lay blame or criticise either the pupil or the perpetrator;



SURBITON

HIGH SCHOOL

- do not promise complete confidentiality — although you can explain that he / she has done the right thing and tell him / her that you will only be passing this information on to the appropriate person within School in order to keep him / her and other children safe;
- tell the pupil what will happen next –the pupil may agree to go with you to see the designated person. Otherwise let him/her know that someone will come to see him/her before the end of the day;
- report the information immediately to the School's DSL, the Deputy Designated Safeguarding Lead or an Assistant Designated Safeguarding Lead
- do not discuss the matter with anyone else;
- seek support if you feel distressed;

All concerns, discussions and decisions made, and the reasons for those decisions, should be recorded in writing. Information should be kept confidential and stored securely. It is good practice to keep concerns and referrals in a separate child protection file for each child. Staff are referred to Appendix 5 of this policy for further clarity on reporting procedures.

Records should include:

- a clear and comprehensive summary of the concern;
- details of how the concern was followed up and resolved;
- a note of any action taken, decisions reached and the outcome.

Surbiton High School recording requirements are as follows:

- All staff are expected to complete a safeguarding concern form when they have a concern. This is available via the MIS. It must be produced as a paper copy, signed by the member of staff and given, in person, to a DSL
- All safeguarding concern forms are kept by the DSL.
- All concerns are logged by the DSL on the Safeguarding and Vulnerable Pupil register. This is an Excel file with restricted access.
- A record of the concern is also held as a Child Protection 'Contact' on the pupil's MIS file. Again, this has restricted access. The record should include the date, time and place of the conversation and detail of what was said and done by whom and in whose presence and signed by the person making it. Where a report includes online elements or the sharing of images, staff are **reminded not to view or forward any illegal images** of a child but note what has been reported. Further guidance can be found here: <https://www.gov.uk/government/publications/sharing-nudes-and-semi-nudes-advice-for-education-settings-working-with-children-and-young-people>

Where there is a safeguarding concern, the School will ensure the student's wishes and feelings are taken into account wherever possible and will work with them (and their families where appropriate) when determining what action to take and what services to provide. This is particularly important in the context of harmful sexual behaviours, such as sexual harassment and violence. The School manages this by discussing such matters with at least two members of staff present, one of whom will be female. Ensuring the pupil is aware of the process and that they are happy to continue. Parents will be invited to the discussions as appropriate.



SURBITON

HIGH SCHOOL

Information sharing: Safeguarding information will often be special category personal data and the School will comply with data protection law and have due regard to the Department for Education's guidance 'Information sharing - Advice for practitioners providing safeguarding services to children, young people, parents and carers' (2018), and the relevant provisions of KCSIE when sharing such data. Personal information may be shared by the School with a third party (such as the police or local authority) without consent if there is a lawful basis to do so such as, where doing so is in order to promote a child's welfare, or where their safety may be at risk. This is because the Data Protection Act 2018 includes 'safeguarding children and individuals at risk' as a condition that allows information to be shared without consent in certain circumstances. Any decision to share or withhold information will be recorded together with the reasons for it and who the information has been given to. The School operates its processes with the best interests of the student at its heart.

Information sharing is vital in identifying and tackling all forms of abuse and neglect, and in promoting children's welfare, including their educational outcomes. Schools have clear powers to share, hold and use information for these purposes. The School will ensure relevant staff comply with the relevant data protection principles when processing and sharing personal information, as provided for in the Data Protection Act 2018 and the UK GDPR. As part of this, the School will ensure that members of staff:

- are confident of the processing conditions which allow them to process and share information for safeguarding purposes, including information which is 'special category personal data'.
- understand that 'safeguarding of children and individuals at risk' is a processing condition that allows practitioners to share special category personal data without consent in certain circumstances.
- Do not provide pupils' personal data where the sharing does not comply with data protection law.

When sharing information, staff will ensure they comply with group data protection policies and keep records of disclosures as required by these policies. These are available to staff via [the United Learning Policies Portal](#). For further information about how the School processes pupil personal data, please see the Privacy Notice on the [website](#).

What staff should do if they have concerns about a child

If staff (including governors, agency staff and volunteers) have any concerns about a child's welfare they should act immediately and should speak with the School's DSL, DDSL or ADSL. If, in exceptional circumstances, the DSL, DDSL or ADSL is not available, this should not delay appropriate action being taken and staff should consider speaking to a member of the Senior Leadership Team and/or take advice from local children's social care. In these circumstances, any action taken should be shared with the DSL, DDSL or ADSL as soon as is practically possible.

The DSL will consider the appropriate action to take in accordance with the threshold document published by the School's local safeguarding partners. Options will include:

- managing any support for the child internally via the School's own pastoral support processes;



SURBITON

HIGH SCHOOL

- making an early help assessment; or
- making a referral for statutory services and / or
- making a referral to the police.

If a child's situation does not appear to be improving, the DSL (or the person that made the referral) should consider following local escalation procedures to ensure their concerns have been addressed and to ensure that the child's situation improves.

Staff should not assume a colleague, or another professional will take action and share information that might be critical in keeping children safe. They should be mindful that early information sharing is vital for effective identification, assessment and allocation of appropriate service provision, whether this is when problems are first emerging, or where a child is already known to local authority children's social care (such as on a child in need or child protection plan). Staff should challenge any inaction and follow this up with the DSL and children's social care as appropriate. All concerns, discussions and decisions made and the reasons for those decisions should be recorded in writing (in line with this policy).

Early Help

Any child may benefit from early help, but all staff should be particularly alert to the potential need for early help for a child who:

- Has a disability or has certain health conditions and has specific additional needs;
- Has special educational needs (whether or not they have a statutory education, health and care plan);
- Has a mental health need;
- Is a young carer;
- Is showing signs of being drawn in to anti-social or criminal behaviour, including gang involvement and association with organised crime groups or county lines;
- Is frequently missing/goes missing from care or from home;
- Is misusing drugs or alcohol themselves;
- Is at risk of modern slavery, trafficking, sexual or criminal exploitation;
- Is at risk of being radicalised or exploited;
- Has a family member (carer/guardian) in prison, or is affected by parental offending;
- Is in a family circumstance presenting challenges for the child, such as drug and alcohol misuse, adult mental health issues or domestic abuse;
- Has returned home to their family from care;
- Is at risk of honour-based abuse such as Female Genital Mutilation or Forced Marriage;
- Is a privately fostered child.
- Is persistently absent from education, including persistent absences for part of the School day.

All staff should be aware that behaviours linked to drug taking and/or alcohol misuse, deliberately missing education and consensual and non-consensual sharing of nudes and semi-nude images and/or videos can be signs that children are at risk.



SURBITON

HIGH SCHOOL

Early help means providing support as soon as a problem emerges at any point in a child's life, from the foundation years through to the teenage years.

In the first instance, staff who consider that a student may benefit from early help should discuss this with the School's DSL, DDSL or ADSL. If early help is appropriate, the DSL will generally lead on liaising with relevant agencies and setting up inter-agency assessment as appropriate. Staff may be required to support other agencies and professionals in an early help assessment, in some cases acting as the lead professional. The DSL will support staff in liaising with external agencies and professionals in an inter-agency assessment, as appropriate. If early help is appropriate, the matter will be kept under constant review and consideration given to a referral to children's social care if the student's situation does not appear to be improving or is getting worse.

What staff should do if a child is suffering, or is likely to suffer from harm

If staff (including governors, agency staff and volunteers) believe that a child is suffering, or is likely to suffer from harm, or is in immediate danger it is important that an **immediate** referral to Kingston's children's social care (and/or the Police if appropriate) is made in accordance with the Kingston Borough Local Authority referral process. Anyone can make a referral. If anyone other than the DSL makes a referral, they should inform the DSL as soon as possible that a referral has been made. Children's social care assessments should consider where children are being harmed in contexts outside the home, so it is important to provide as much information as possible as part of the referral process, to enable a contextual approach (see further below re Contextual Safeguarding).

The School's local safeguarding partner is Kingston and Richmond Safeguarding Children Partnership, and the locally agreed safeguarding arrangements can be found [here](#).

What staff should do if a child is seen as at risk of radicalisation and extremism

(Note: further guidance and information, including indicators of vulnerability and critical risk factors can be found in Appendix One)

Staff should follow the School's normal Safeguarding referral processes when there are concerns about children who may be at risk of being drawn into terrorism, as set out above. This may include a referral to Channel or children's social care depending on the level of risk. However, if staff have concerns that there is an immediate/significant risk of a child being drawn into terrorism they must call 999 or submit a referral via Kingston and Richmond's Single Point of Access and via e-mail to prevent@kingston.gov.uk.

The School, in recognition that students may be at risk of being drawn into terrorism or other forms of extremism, carries out appropriate risk assessments (following consultation with local partners, such as the Police) of the potential risk in the local area. Such risk assessments are discussed with the Head, DSL and governors responsible for safeguarding to ensure the School's safeguarding arrangements are sufficiently robust to help prevent and protect children from being drawn into terrorism and are regularly revised.

See further below for more information on radicalisation. Further guidance can be found in the Revised Prevent duty guidance: for England and Wales April 2021.



SURBITON

HIGH SCHOOL

What staff should do if they discover an act of Female Genital Mutilation ('FGM')

All staff should speak to the DSL, DDSL or an ADSL about any concerns about FGM. Teaching staff have a separate duty to report to the Police cases where they discover that an act of FGM appears to have been carried out on a girl under the age of 18. All staff are referred to Appendix 1 of this policy for the procedure to be followed where they suspect or discover that a student may be at risk of FGM.

What staff should do if a child goes Missing from Education/Children Absent from Education

Children missing/absent from education, particularly repeatedly and/or for prolonged periods, and children missing education can act as a vital warning sign of a range of safeguarding possibilities. This may include abuse and neglect such as sexual abuse or exploitation and can also be a sign of child criminal exploitation including involvement in county lines. It may indicate mental health problems, risk of substance abuse, risk of travelling to conflict zones, risk of female genital mutilation, so called 'honour'-based abuse or risk of forced marriage. Early intervention is essential to identify the existence of any underlying safeguarding risk and to help prevent the risks of a child going missing in future. It is important that staff are aware of their school's or college's unauthorised absence procedures and children missing education procedures. Children who go missing from education, particularly on repeat occasions, is a potential indicator of a range of safeguarding possibilities. The School's procedures for unauthorised absence and for dealing with children who go missing from education are available in the Missing Pupils policy. Further detail can also be found at Appendix 1 of this policy.

All staff should be aware that children being absent from school or college, particularly repeatedly and/or for prolonged periods, and children missing education can act as a vital warning sign of a range of safeguarding possibilities. This may include abuse and neglect

The School will report to Kingston Upon Thames local authority a student who fails to attend School regularly or has been absent from School without the School's permission for a continuous period of 5 school days or more.

Elective Home Education

Where a parent/carer has expressed their intention to remove a child from school with a view to educating at home, the School will try to work together with the local authority and key professionals to coordinate a meeting with parents/carers where possible. Ideally, this would be before a final decision has been made, to ensure the parents/carers have considered what is in the best interests of each child. This is particularly important where a child has SEND, is vulnerable, and/or has a social worker. The School will inform the local authority of all deletions from the admissions register when a child is taken off roll.

What staff should do if they have concerns about another staff member (including supply staff, volunteers and contractors)

If staff have safeguarding concerns, or an allegation is made about another staff member posing a risk of harm to children, then this should be referred to the Principal. Where there are



SURBITON

HIGH SCHOOL

concerns/allegations about the Principal, this should be referred to the Chair of the LGB, Head of Safeguarding and Head of Independent Schools. In the event of concerns/allegations of abuse being made, staff are referred to the procedures below regarding managing allegations of abuse against staff (including volunteers).

What staff should do if they have concerns about safeguarding practices in the School

Where staff have concerns about poor or unsafe practices and potential failures in the School's safeguarding regimes, these should be raised in accordance with the School's whistleblowing procedures, which can be found via the United Learning Hub. There will be no disciplinary action taken against a member of staff for making such a report provided that it is done in good faith.

If staff and volunteers feel unable to raise an issue with the School, feel that their genuine concerns are not being (or have not been) addressed or are concerned about the way a concern is being handled, they may use other whistleblowing channels, such as the NSPCC whistleblowing helpline. Contact details for the NSPCC helpline can be found on the Key Contacts page at the start of this policy.

Child-on-child abuse (including sexual violence and sexual harassment)

Safeguarding issues can manifest themselves via child-on-child abuse. Child-on-child abuse is any form of physical, sexual, emotional and financial abuse, and coercive control, exercised between two or more children and within children's relationships (both intimate and non-intimate). All staff working with children are advised to maintain an attitude of "it could happen here". Staff should recognise that even if there are no reports, it does not mean that child-on-child abuse is not happening, it may be the case that it is just not being reported

This is most likely to include, but may not be limited to:

- Abuse in intimate personal relationships between children;
- Bullying (including cyberbullying);
- Physical abuse such as hitting, kicking, shaking, biting, hair pulling, or otherwise causing physical harm (this may include an online element which facilitates, threatens and/or encourages physical abuse);
- Sexual violence, such as rape assault by penetration and sexual assault (this may include an online element which facilitates, threatens and/or encourages sexual violence);
- Sexual harassment, such as sexual comments, jokes and online sexual harassment, or misogynistic messages which may be stand alone or part of a broader pattern of abuse;
- The non-consensual sharing of indecent images*, especially around chat groups, and the sharing of abusive images, nudes, videos and pornography to those who do not want to receive it (see further below);
- Causing someone to engage in sexual activity without consent, such as forcing someone to strip, touch themselves sexually, or to engage in sexual activity with a third party;
- Initiation/hazing type violence and rituals (this could include activities involving harassment, abuse or humiliation used as a way of initiating a person into a group and may also include an online element); and



SURBITON

HIGH SCHOOL

- Upskirting, which typically involves taking a picture under a person's clothing without them knowing, with the intention of viewing their genitals or buttocks to obtain sexual gratification, or cause the victim humiliation, distress or alarm.

The School recognises the gendered nature of child-on-child abuse (i.e., that it is more likely that girls will be “victims” and boys, “perpetrators”). Even if there are no reports in their school it does not mean it is not happening, it may be the case that it is just not being reported. As such, if staff have **any** concerns regarding child-on-child abuse, they should speak to their designated safeguarding lead (or deputy).

Child-on-child abuse can be associated with factors outside school and can occur online and face-to-face between two or more children of any age or gender. The School therefore takes a contextual safeguarding approach to managing child-on-child abuse.

Child-on-child abuse is abuse and is never acceptable. The School takes a zero-tolerance approach. It should never be passed off or dismissed as “banter”, “part of growing up”, “just having a laugh” or “boys being boys”.

The School takes the following steps to minimise the risk of child-on-child abuse

- taking every opportunity to live out our School motto “May Love Always Lead Us” both by example and by encouraging pupils to do likewise
- issuing and implementing a pupil Code of Conduct that emphasises the importance of mutual respect and consideration for all members of the School community
- rewarding / praising kind and considerate behaviour
- challenging intimidating, unkind and inconsiderate behaviour wherever we encounter it, however minor it may appear, issuing sanctions as appropriate
- strongly discouraging and challenging overtly sexualised behaviour or language; prohibiting pornography in any form
- adopting a zero-tolerance approach to bullying
- limiting opportunities for cyber-bullying/abuse by controlling the use of electronic devices in School
- using Assemblies, Form Prayers, Friday Reflections, House events and PSHE to celebrate and underline the importance of individuality, diversity, and the unconditional value of all humans
- being alert to any behaviour or the development of circumstances which may suggest that bullying / abuse could be more likely to happen (such as: the formation of gangs or assertive cliques; certain pupils appearing to be uncomfortable in the presence of other pupils; overtly sexualised behaviour / use of sexual language)- and reporting any concerns to a senior member of staff
- publicising to pupils where to go if they are scared, intimidated, or concerned about others' behaviour
- subjecting Year 12 Peer Mentors to a ‘vetting’ procedure and compulsory training before they are allowed to begin mentoring younger pupils; they are subsequently monitored by adults in the School



SURBITON

HIGH SCHOOL

Consensual image sharing, especially between older children of the same age, may require a different response. Whilst not abusive, children still need to know it is illegal, whilst non-consensual sharing is illegal and abusive.

The School's approach to pupil's sharing nudes and semi-nude images and or videos (also known as sexting or youth produced sexual imagery) is that it should be treated as a safeguarding concern. The DSL will then:

- hold an initial review meeting with appropriate School staff
- interview the young people involved (if appropriate)
- inform parents at an early stage and involve them in the process unless there is good reason to believe that involving parents would put the young person at risk of harm
- if there is a concern a young person has been harmed or is at risk of harm a referral will be made to children's social care and/or the police immediately.

Further guidance can be found in the [UKCIS Sharing nudes and semi-nudes: advice for education settings guidance](#).

Where an issue of student behaviour or bullying gives 'reasonable cause to suspect that a child is suffering, or is likely to suffer, significant harm', staff should follow the procedures below rather than the School's Anti-Bullying and Behaviour policies in the first instance:

What to do if staff suspect that a child may be at risk or hears a report of child-on-child abuse

For detailed information on what sexual violence and sexual harassment constitutes, important context to be aware of, related legal responsibilities for schools and colleges, advice on a whole-school or college approach to preventing child-on-child sexual violence and sexual harassment and more detailed advice on responding to reports see the Department for Education's statutory guidance: ***Keeping Children Safe in Education (2023), Part 5 – Child-on-child sexual violence and sexual harassment***

Surbiton High School will manage child-on-child abuse allegations in line with its [Child-on-child abuse policy](#). These will be reviewed, at least annually.

The School's initial response to a report from a child is important. How the School responds to a report can encourage or undermine the confidence of future victims of sexual violence and sexual harassment to report or come forward.

It is essential that **all** victims are reassured that they are being taken seriously, regardless of how long it has taken them to come forward and that they will be supported and kept safe. Abuse that occurs online should not be downplayed and should be treated seriously. All staff should be able to reassure victims that they are being taken seriously and that they will be supported and kept safe. A victim should never be given the impression that they are creating a problem by reporting abuse, sexual violence or sexual harassment. Nor should a victim ever be made to feel ashamed for making a report. It is important to explain that the law is in place to protect children and young people rather than criminalise them, and this should be explained in such a way that avoids alarming or distressing them.



SURBITON

HIGH SCHOOL

It is important to note that children may not find it easy to tell staff about their abuse verbally. Children can show signs or act in ways that they hope adults will notice and react to. In some cases, the victim may not make a direct report. For example, a friend may make a report, or a member of School staff may overhear a conversation that suggests a child has been harmed or a child's own behaviour might indicate that something is wrong. If staff have **any** concerns about a child's welfare, they should act on them immediately rather than wait to be told. All staff are trained to manage a report. Effective safeguarding practice includes:

- if possible, managing reports with two members of staff present, (preferably one of them being the designated safeguarding lead or a deputy). However, this might not always be possible;
- not promising confidentiality at this initial stage as it is very likely a concern will have to be shared further (for example, with the designated safeguarding lead or children's social care) to discuss next steps. Staff should only share the report with those people who are necessary in order to progress it. It is important that the victim understands what the next steps will be and who the report will be passed to;
- recognising that a child is likely to disclose to someone they trust: this could be anyone on the School staff. It is important that the person to whom the child discloses recognises that the child has placed them in a position of trust. They should be supportive and respectful of the child;
- recognising that an initial disclosure to a trusted adult may only be the first incident reported, rather than representative of a singular incident and that trauma can memory and so children may not be able to recall all details or timeline of abuse;
- keeping in mind that certain children may face additional barriers to telling someone because of their disability, sex, ethnicity and/or sexual orientation;
- listening carefully to the child, reflecting back, using the child's language, being non-judgmental, being clear about boundaries and how the report will be progressed, not asking leading questions and only prompting the child where necessary with open questions – where, when, what, etc. It is important to note that whilst leading questions should be avoided, staff can ask children if they have been harmed and what the nature of that harm was;
- considering the best way to make a record of the report. Best practice is to wait until the end of the report and immediately write up a thorough summary. This allows the staff member to devote their full attention to the child and to listen to what they are saying. It may be appropriate to make notes during the report (especially if a second member of staff is present). However, if making notes, staff should be conscious of the need to remain engaged with the child and not appear distracted by the note taking. Either way, it is essential a written record is made;
- only recording the facts as the child presents them. The notes should not reflect the personal opinion of the note taker. Schools should be aware that notes of such reports could become part of a statutory assessment by children's social care and/or part of a criminal investigation;
- where the report includes an online element, being aware of searching screening and confiscation advice (for schools) and UKCIS guidance on Sharing nudes and semi-nudes: advice for education settings working with children and young people.
- informing the designated safeguarding lead (or deputy), as soon as practically possible, if the designated safeguarding lead (or deputy) is not involved in the initial report.



SURBITON

HIGH SCHOOL

If a staff member has a concern that a child may be at risk of or experiencing abuse by another child, or that a child may be at risk of abusing or may be abusing other children, they should discuss their concern with the DSL or DDSL without delay so that a course of action can be agreed.

The School recognises that a child is likely to disclose an allegation to someone they trust: this could be any member of staff. By making such a disclosure the pupil is likely to feel that the member of staff is in a position of trust.

All concerns/allegations of child-on-child abuse will be handled sensitively, appropriately and promptly and will be investigated including consideration of the wider context in which it may have occurred (as appropriate). The School treats all children involved as being at potential risk and ensures a safeguarding response is in place for both the child who has allegedly experienced the abuse, and the child who has allegedly been responsible for it. **Immediate** consideration will therefore be given as to how best to support and protect all children involved/impacted.

The School will take into account the views of the child/children affected. Unless it is considered unsafe to do so, the DSL should discuss the proposed action with the child/children and their parents following appropriate liaison with children's social care. The School should manage the child/children's expectations about information sharing, and keep them and their parents informed of developments, where appropriate and safe to do so.

All children affected by child-on-child abuse will be supported by a School counsellor, a member of the Senior Leadership Team and their Head of Year and support from external agencies will be sought, as appropriate. "Victims" will be reassured that they are being taken seriously and that they will be supported and kept safe. The School recognises that children with special educational needs and disabilities or certain health conditions can be more prone to peer on peer group isolation than other children and will consider extra pastoral support for those children.

A student against whom an allegation of abuse has been made may be suspended from the School during the investigation. The School will take advice from relevant local safeguarding partners on the investigation of such allegations and will take all appropriate action to ensure the safety and welfare of all students involved including the alleged "victim" and "perpetrator". If it is necessary for a student to be interviewed by the Police in relation to allegations of abuse, the School will ensure that, subject to the advice of the relevant local safeguarding partners, parents are informed as soon as possible and that the students involved are supported during the interview by an appropriate adult and until the investigation is completed. Confidentiality will be an important consideration for the School and advice will be sought as necessary from the relevant local safeguarding partners, such as children's social care and/ or the Police as appropriate.

Reports concerning harmful sexual behaviour (including sexual violence and sexual harassment)

Consideration of safeguarding all those children involved in the safeguarding report will be immediate. Following a report of sexual violence and/or sexual harassment the DSL will therefore consider the appropriate response. Important considerations will include:

- The wishes of the victim in terms of how they want to proceed;
- The nature of the alleged incident, including whether a crime may have been committed and/or whether harmful sexual behaviour has been displayed;
- The ages of the children involved;



SURBITON

HIGH SCHOOL

- The developmental stages of the children involved;
- Any power imbalance between the children (e.g., is/are the alleged perpetrator(s) significantly older, more mature, confident and well known social standing? Does the victim have a disability or learning difficulty);
- If the alleged incident is a one-off or sustained pattern of abuse (NB. sexual abuse can be accompanied by other forms of abuse and a sustained pattern may not just be of a sexual nature);
- That sexual violence and sexual harassment can take place within intimate personal relationships between children;
- Any ongoing risks to the victim, other children, adult students, or school/college staff;
- Importance of understanding intra familial harms and any necessary support for siblings following incidents;
- Other related issues and wider context, including any links to child sexual exploitation and child criminal exploitation.

When there has been a report of sexual violence, the DSL (or a deputy DSL) should make an immediate risk and needs assessment in respect of each child affected by the abuse. Where there has been a report of sexual harassment the need for a risk assessment should be considered on a case-by-case basis. The [Risk and Needs Assessment](#) should consider:

- the “victim”;
- the alleged “perpetrator”; and
- the other children (and, if appropriate, staff) at the School.

The DSL will consider as part of the School’s response, the context within which such incidents and/or behaviours occur and the importance of anonymity. Risk assessments will be recorded (either written or electronic) and kept under review. The DSL will consider the risks posed to all students and put adequate measures in place to protect them and keep them safe. This may include consideration of the proximity of the “victim” and alleged “perpetrator” and considerations regarding shared classes, sharing School premises and School transport. Any professional risk assessment will inform the School’s approach.

The police will be informed of any harmful sexual behaviours including sexual violence and sexual harassment which are potentially criminal in nature, such as grabbing bottoms, breasts and genitalia. Rape, assault by penetration and sexual assaults will be passed to the police. A report to the police will generally be made in parallel with a referral to children’s social care.

If the DSL decides to make a referral to children’s social care and/or a report to the police against a “victim’s” wishes, the reasons should be explained to the student and appropriate specialist support offered. The DSL or DDSL will also work closely with children’s social care and other agencies are required to ensure any action taken under this policy does not jeopardise any statutory investigation and to discuss how the alleged “perpetrator”, staff, parents and others will be informed of the allegations and what information can be disclosed bearing in mind the need to protect those involved and their anonymity.

Regardless of the outcome of any criminal process, including where a child is subject to bail, the DSL will liaise with the police and children’s social care to ensure the welfare and safety of all children and update the risk assessments and ensure relevant protections and measures are in place for all children.



SURBITON

HIGH SCHOOL

The School will consider whether disciplinary action may be appropriate for any child/children involved. Before deciding on appropriate action, the School will always consider its duty to safeguard all children from harm; the underlying reasons for a child's behaviour; any unmet needs, or harm or abuse suffered by the child; the risk that the child may pose to other children; and the severity of the child-on-child abuse and the causes of it.

The DSL will ensure that where children move to another educational institution following an incident of child-on-child abuse, the new institution is made aware of any ongoing support needs and, where appropriate, any potential risks to other children and staff.

The School recognises that good record-keeping and monitoring of sexual violence and sexual harassment reports is essential

Contextual Safeguarding

All staff should be aware that safeguarding incidents and/or behaviours can be associated with factors outside the School and/or can occur between children outside of these environments. All staff, but especially the designated safeguarding lead (and deputies) should consider whether children are at risk of abuse or exploitation in situations outside their families. Extra-familial harms take a variety of different forms and children can be vulnerable to multiple harms including (but not limited to) sexual exploitation, criminal exploitation, and serious youth violence.

When assessing pupils who may need "early help" it should be considered how the needs of different family members impact each other. This includes needs relating to education, mental and physical health, financial stability, housing, substance use and crime. Specific needs should also be considered such as disabilities, those whose first language is not English, fathers or male carers, and parents who identify as LGBTQ+.

Safeguarding concerns and allegations made about staff, including supply teachers, volunteers and contractors

The School's procedures for managing concerns/ allegations against staff who are currently working in the School follows Department for Education statutory guidance and local safeguarding partners' arrangements and applies when staff (including supply staff, volunteers, and contractors) have (or are alleged to have):

- Behaved in a way that has harmed a student, or may have harmed a student; and/or
- Possibly committed a criminal offence against or related to a student; and/or
- Behaved towards a student in a way that indicated that they may pose a risk of harm if they were to work regularly or closely with children; and/or
- behaved or may have behaved in a way that indicates they may not be suitable to work with children (including behaviour that may have happened outside school, that might make them unsuitable to work with children "transferable risk". Advice can be sought from the LADO in assessing transferable risk).



SURBITON

HIGH SCHOOL

Non-recent allegations

Allegations against an adult that is no longer working/volunteering with children should be referred to the Police. Where it is known that the adult is still working/volunteering with children, all allegations (including historical/non-recent allegations of abuse) should be referred to the Police and the LADO in the local authority that the adult is working/volunteering.

Where an adult makes an allegation to a school that they were abused as a child, they should be advised to report the allegation to the police. Non-recent allegations made by a child, should be reported to the LADO in line with the local authority's procedures for dealing with non-recent allegations, which can be found [here](#). Abuse can be reported no matter how long ago it happened.

If an allegation is made against anyone working with children in the School, the School should not undertake their own investigation of allegations without prior consultation with the Local Authority 'designated officer' (LADO) or, in the most serious cases, the Police, so as not to jeopardise statutory investigations. In borderline cases, the School may discuss informally with the Local Authority 'designated officer' (LADO) on a no-names basis (if local safeguarding procedures allow).

All allegations should be investigated as a priority to avoid any delay.

Allegations that may meet the harms threshold

1. All allegations which appear to meet the above reporting criteria are to be **reported straight away to the 'case manager'** who is the Principal. Where the Principal is absent or is the subject of the allegation or concern, reports should be made to Chair of the LGB and Head of Safeguarding. Where the Principal is the subject of the allegation or concern, the Principal must not be informed of the allegation prior to contact with Chair of the LGB, Head of Safeguarding and LADO, and if appropriate, children's social care and the police.
2. **Welfare of the child:** Where the case manager deems that a child has been harmed, or there to be an immediate risk of harm to a child, or if the situation is an emergency, the DSL (or DDSL) should contact Children's Social Care and, as appropriate (e.g., if there is evidence of a possible criminal offence), the Police immediately.
3. **Investigating and supporting the person subject to the allegation:** Before contacting the LADO, schools should conduct basic enquiries in line with local procedures to establish the facts and help determine if there is any foundation to the allegation, being careful not to jeopardise any future police investigation, such as:
 - Was the individual in the School at the time of the allegation?
 - Could they have come into contact with the child?Schools should establish what initial information the LADO will require, and if in doubt check with the LADO before undertaking any initial enquiries, to ensure not to prejudice the position.
4. The case manager should immediately discuss the allegation with the LADO and consider the nature, content and context of the allegation and agree a course of action including any involvement of the Police. The designated officer should be informed within one working day of all allegations that come to the School's attention and appear to meet the criteria or that are made directly to the Police and/or children's social care.



SURBITON

HIGH SCHOOL

5. All discussions should be recorded in writing, and any communication with both the individual and the parents of the child(ren) agreed with the Police/LADO. The case manager will ensure that the individual who is subject of the allegation is informed as soon as possible and given an explanation of the likely course or action unless there is an objection by children's social care or the Police. The case manager will appoint a named representative to keep the individual informed of the progress of the case and will consider what other support is appropriate for the individual.
6. **Suspension:** The case manager should give careful consideration as to whether the circumstances of the case warrant suspension or whether alternative arrangements should be put in place until the allegation is resolved. The case manager will give due weight to the views of the LADO, their HR adviser, as well as the police and children's social care if relevant when making a decision about suspension. Where the individual is suspended, the case manager will ensure they know who their point of contact is in the School and shall provide them with their contact details.
7. **Support for the member of staff:** whilst the welfare of the child is paramount, appropriate welfare support should also be made for the member of staff. Information is confidential, and should not ordinarily be shared with other staff, children or parents not directly involved. See further guidance in KCSIE.
8. The case manager will ensure that parents are informed as soon as possible and kept informed about progress of the case, subject to any advice from children's social care or the Police.
9. **Further investigation:** where further investigation is required, the LADO and case manager will agree how and by whom the further investigation will be undertaken.
10. The case manager will discuss with the designated officer whether a referral to the **Disclosure and Barring Service (DBS) and/or Teaching Regulation Agency (TRA)** should be made, noting the requirements of KCSIE. For instance:
 - a. If: 1) the allegation is substantiated; and 2) the person is dismissed (including by an agency) or the School (or agency) ceases to use their services, or the person resigns or otherwise ceases to provide their services, then the employer has a legal duty to make a referral to the DBS for consideration of whether inclusion on the barred lists is required.
 - b. The employer has a legal requirement to make a referral to the DBS where they remove an individual from regulated activity (or would have removed an individual had they not left), and they believe the individual has:
 - i. engaged in relevant conduct in relation to children and/or adults,
 - ii. satisfied the harm test in relation to children and/or vulnerable adults; or
 - iii. been cautioned or convicted of a relevant (automatic barring either with or without the right to make representations) offence.
 - c. In a case involving serious professional misconduct by a teacher, the case manager must consider whether to make a referral to the TRA. In certain cases, the TRA will consider whether to prohibiting the individual from teaching.



SURBITON

HIGH SCHOOL

11. Where the initial discussion leads to no further action, the case manager and the LADO should record the decision and justification for it; and agree on what information should be put in writing to the individual concerned and by whom.
12. On conclusion of the case, the case manager should review the circumstances of the case with the designated officer to determine whether there are any improvements to be made to the School's safeguarding procedures or practices to help prevent similar events in the future. This should include issues arising from any decision to suspend the member of staff, the duration of the suspension and whether or not suspension was justified. Lessons should also be learnt from the use of suspension when the individual is subsequently reinstated. The designate officer and case manager should consider how future investigations of a similar 98 nature could be carried out without suspending the individual.
13. For all other cases, where the allegation concluded to be either, unfounded, false, malicious or unsubstantiated the case manager (and if they have been involved the designated officer) should consider the facts and determine whether any lessons can be learned and if improvements can be made.
14. **Settlement:** Compromise or settlement agreements **should not** be used where there are allegations which indicate the person poses a risk of harm or may not be suitable to work with children and will not prevent a police and/or School investigation, or referral to the DBS or TRA where the criteria are met. Failure to do so is a criminal offence. The School will continue its investigation if the person leaves, resigns or ceases to provide their services. Schools should check the relevant provisions of KCSIE.

Information sharing

Staff should be mindful of the guidance set out in KCSIE in relation to sharing information between safeguarding partners during the course of the process of managing allegations against staff.

The School will make every reasonable effort to maintain confidentiality and guard against unwanted publicity whilst an allegation is being investigated or considered.

Allegation outcomes

Allegations found to be malicious will be removed from the individual's personnel records. In all other circumstances a written record will be made of the decision and retained on the individual's personnel file in accordance with KCSIE and a copy will only be provided to the individual concerned.

Allegations proven to be false, unsubstantiated, unfounded or malicious will not be included in employer references. Substantiated allegations should be included in references, provided that the information is factual and does not include opinions (KCSIE). Low level concerns (see below) should not be included in references unless they relate to issues which would normally be included in a reference such as misconduct or poor performance (KCSIE).



SURBITON

HIGH SCHOOL

If an allegation is determined to be unsubstantiated, unfounded, false or malicious, the LADO and case manager should consider whether the child and/or person who made the allegation is in need of help or may have been abused by someone else, in which case a referral to children's social care may be appropriate.

If an allegation is shown to be deliberately invented or malicious, the Head will consider whether any disciplinary action is appropriate against a student who made it in accordance with the School's behaviour policy; or whether the Police should be asked to consider if action might be appropriate against the person responsible even if they are not a student.

Supply teachers and all contracted staff

Where the School has to consider an allegation against an individual not directly employed by them, where its disciplinary procedures do not fully apply, for example, supply teachers provided by an employment agency or business (referred to in this section as 'the agency'), they will ensure allegations are dealt with properly. They will liaise with the local authority designated officer (LADO) to determine a suitable outcome and discuss with the agency whether it is appropriate to suspend the supply teacher or redeploy them to another part.

Agencies should be fully involved and cooperate with any enquiries from the LADO, police and/or children's social care. The School will usually take the lead because agencies do not have direct access to children or other School staff, so they will not be able to collect the facts when an allegation is made, nor do they have all the relevant information required by the LADO as part of the referral process.

When using an agency, the schools will inform the agency of its process for managing allegations but also take account of the agency's policies and their duty to refer to the DBS as personnel suppliers. This should include inviting the agency's human resource manager or equivalent to meetings and keeping them up to date with information about its policies.

Governors

If an allegation is made against a governor, schools should follow their own local procedures. Where an allegation is substantiated, they should follow the procedures to consider removing them from office.

Organisations or individuals using School premises

Schools and colleges may receive an allegation relating to an incident that happened when an individual or organisation was using their School premises for the purposes of running activities for children (for example community groups, sports associations, or service providers that run extra-curricular activities). As with any safeguarding allegation, schools and colleges should follow their safeguarding policies and procedures, including informing the LADO.

Concerns that do not meet the harm threshold/Low-level Concerns Policy

As part of their whole-school approach to safeguarding, the School will ensure that they promote an open and transparent culture in which **all** concerns about all adults working in or on behalf of the



SURBITON

HIGH SCHOOL

School (including supply teachers, volunteers (including governors) and contractors) are dealt with promptly and appropriately.

The term 'low-level' concern does not mean that it is insignificant. A low-level concern is any concern – no matter how small, and even if no more than causing a sense of unease or a 'nagging doubt' - that an adult working in or on behalf of the School may have acted in a way that:

- is inconsistent with the staff code of conduct, including inappropriate conduct outside of work, and
- relates to their conduct outside of work which, even if not linked to a particular act or omission, has caused a sense of unease about that adult's suitability to work with children.
- does not meet the allegations threshold or is otherwise not considered serious enough to consider a referral to the LADO.

Examples of such behaviour could include, but are not limited to:

- being over friendly with children;
- having favourites;
- taking photographs of children on their mobile phone;
- engaging with a child on a one-to-one basis in a secluded area or behind a closed door; or,
- using inappropriate sexualised, intimidating or offensive language.
- Humiliating children

It is crucial that any such concerns, including those which do not meet the allegation/harm threshold, are shared responsibly and with the right person, and recorded and dealt with appropriately.

Sharing/reporting a concern

Low-level concerns about a member of staff should be reported to Principal. Where a low-level concern is raised about the designated safeguarding lead, it should be shared with the headteacher or principal. If someone is unclear who they should share their concern with, they should share it with the United Learning Safeguarding Lead, who is part of the Central Office Team. Staff do not need to be able to determine in each case whether their concern is a low-level concern, or if it is in fact serious enough to consider a referral to the LADO or meets the threshold of an allegation. The Principal should be the ultimate decision maker in respect of all low-level concerns, although it is recognised that depending on the nature of some low-level concerns and/or the role of the DSL in some schools/colleges, the Principal may wish to consult with the DSL and take a more collaborative decision-making approach.

Where a low-level concern relates to a person employed by a supply agency or a contractor to work in a school or college, that concern should be shared with the designated safeguarding lead (or deputy), and/or headteacher, and recorded in accordance with the School's low-level concern/staff code of conduct policy, and their employer notified about the concern, so that any potential patterns of inappropriate behaviour can be identified.



SURBITON

HIGH SCHOOL

If the staff member sharing the concern does not wish to be named the School will respect this person's wishes as far as possible. However, there may be circumstances where the staff member will need to be named (for example where it is necessary in order to carry out a fair disciplinary investigation) and, for this reason, anonymity can never be promised to members of staff who share low-level concerns.

If schools and colleges are in any doubt as to whether the information which has been shared about a member of staff as a low-level concern in fact meets the harm threshold, they should consult with their LADO.

Self-Reporting

Occasionally an adult may find themselves in a situation which could be misinterpreted or might appear compromising to others. Equally, an adult may, for whatever reason, have behaved in a manner which, on reflection, they consider falls below the standard set out in the Code of Conduct. Self-reporting in these circumstances can be positive for a number of reasons: it is self-protective, in that it enables a potentially difficult issue to be addressed at the earliest opportunity; it demonstrates awareness of the expected behavioural standards and self-awareness as to the individual's own actions or how they could be perceived; and, crucially, it is an important means of maintaining a culture where everyone aspires to the highest standards of conduct and behaviour.

How should a low-level concern be responded to

The Principal should:

- speak to the person who raised the concern (unless it has been raised anonymously), regardless of whether a written summary, or completed low-level concerns form has been provided;
- review the information and determine whether the behaviour (i) is entirely consistent with the School's Code of Conduct and the law, (ii) constitutes a low-level concern, (iii) is serious enough to consider a referral to the LADO, or (iv) when considered with any other low-level concerns that have previously been raised about the same individual, should be reclassified as an allegation and referred to the LADO/other relevant external agencies;
- **where the Principal is in any doubt whatsoever, they should seek advice from the LADO;**
- speak to the individual about whom the low-level concern has been raised (unless advised not to do so by the LADO/other relevant external agencies, where they have been contacted);

Any investigation of low-level concerns should be done discreetly and, on a need-to-know basis.

Advice should be sought from Human Resources and legal services (where necessary) about next steps. There are a number of potential outcomes e.g.

- If it is decided that the low-level concern in fact amounts to behaviour which is entirely consistent with the organisation's Code of Conduct and the law it will still be important for the Principal to inform the individual in question what was shared about their behaviour, and to give them an opportunity to respond to it; In addition, the Principal should speak to the person who shared the low-level concern to provide them with feedback about how and why the behaviour is consistent with the organisation's Code of Conduct and the law.
- Some will not give rise to any ongoing concern and, accordingly, will not require any further action;



SURBITON

HIGH SCHOOL

- Others may be most appropriately dealt with by means of management guidance and/or training;
- A low-level concern may require a conversation with the individual about whom the concern has been raised. This should include being clear with the individual as to why their behaviour is concerning, problematic or inappropriate, what change is required in their behaviour, enquiring what, if any, support they might need in order to achieve and maintain that, and being clear about the consequences if they fail to reach the required standard or repeat the behaviour in question. Ongoing and transparent monitoring of the individual's behaviour may be appropriate. An action plan or risk assessment which is agreed with the individual, and regularly reviewed with them, may also be appropriate;
- Some low-level concerns may also raise issues of misconduct or poor performance;
- Some concerns may trigger the organisation's disciplinary, grievance or whistleblowing procedures, which should be followed where appropriate;
- A referral to the LADO as the School believes the threshold has been met.
- The School should exercise their professional judgement and, if in any doubt, they should seek advice from other external agencies including the LADO.

The Principal should review the central low-level concerns file periodically to ensure that all such concerns are being dealt with promptly and appropriately, and that any potential patterns of concerning, problematic or inappropriate behaviour are identified. A record of these reviews should be made.

Recording concerns

All procedures for recording and storing of records should comply with United Learning's Data Protection Policies.

All low-level concerns should be recorded in writing by the Principal. The record should include details of the concern, the context in which the concern arose, and action taken. The name of the individual sharing their concerns should also be noted, if the individual wishes to remain anonymous then that should be respected as far as reasonably possible.

The name of the individual sharing the low-level concern, and their role, should be stated, as should the name of the individual about whom the concern is being raised, and their role within the organisation at the time the concern is raised. If the latter individual has an opposing factual view of the incident, this should be fairly recorded alongside the concern. The record should include brief context in which the low-level concern arose, and concise details (which are chronological and as precise and accurate as possible) of any such concern and relevant incident(s). The record should be signed, timed and dated.

There should be appropriate records of:

- all internal conversations – including with the person who initially shared the low-level concern (where this has been possible), the adult about whom the concern has been shared (subject to the above), and any relevant witnesses;
- all external conversations – for example, with the LADO/other external agencies;
- the rationale for decisions;
- any action taken.



SURBITON

HIGH SCHOOL

Records should be reviewed so that potential patterns of concerning, problematic or inappropriate behaviour can be identified. Where a pattern of such behaviour is identified, the School will decide on a course of action, either through its disciplinary procedures or where a pattern of behaviour moves from a concern to meeting the harms threshold, in which case it should be referred to the LADO. Consideration will also be given to whether there are wider cultural issues within the School that enabled the behaviour to occur and where appropriate policies could be revised, or extra training delivered to minimise the risk of it happening again.

Adults about whom a low-level concern has been raised may have rights of access to such records, provided of course that this would not also unreasonably disclose information of children concerned.

The School should retain the record consistent with comply with United Learning's Data Protection policies. The School should retain all records of low-level concerns (including those which are subsequently deemed by the Principal to relate to behaviour which is entirely consistent with the Code of Conduct) in a central low-level concerns file (either electronic or hard copy). Where multiple low-level concerns have been shared regarding the same individual these should be kept in chronological order as a running record. These records should be kept confidential and held securely, with access afforded only to a limited number of individuals such as the Principal and the individual they report to (e.g., Regional Director); and senior HR officer, and the individual they report to (e.g., Head of HR). The Principal may store the central low level concerns file with his/her other safeguarding and child protection records.

Some low-level concerns may also involve issues of misconduct or poor performance, or they may trigger the disciplinary, grievance or whistleblowing procedures. Where these issues would ordinarily require records to be made and retained on the staff member's personnel file, this should be done in the normal way, in addition to the records of the low-level concern(s) being retained in a central low-level concerns file.

If a low-level concern in and of itself is deemed to be serious enough to consider a referral to the LADO and, perhaps following consultation, a referral is made to them, then records relating to the low-level concern should be placed and retained on the staff member's personnel file.

If a low-level concern (or group of concerns) is reclassified as an allegation, all previous records of low-level concerns relating to the same individual should be moved from the central low-level concerns file to the staff member's personnel file and retained in accordance with Part 4 of KCSIE.

When a staff member leaves and/or takes up new employment, that creates a natural point at which the content of the file may be reviewed to ensure it still has value (either as a safeguarding measure or because of its possible relevance to future claims) and is therefore necessary to keep.

Low-level concerns should not be referred to in references unless they relate to issues which would ordinarily be included in a reference, for example, misconduct or consistent poor performance. It follows that a low-level concern which relates exclusively to safeguarding (and not to misconduct or poor performance) should not be referred to in a reference. Where a low-level concern (or group of concerns) has met the threshold for referral to LADO and found to be substantiated, it should be referred to in a reference. A history of repeated concerns or allegations which have all been found to be false, unsubstantiated or malicious should also not be included in any reference.

The School will refer to Part Four, Section Two of KCSIE for further advice and guidance.



SURBITON

HIGH SCHOOL

Staff Behaviour Policy / Code of Conduct

The School's staff code of conduct can be found in the Staff Handbook. The aim of the code of conduct is to provide clear guidance about behaviour and actions and responses to low level concerns in order not to place students or staff at risk of harm or of allegation of harm to a student.

Safer Recruitment

The School is committed to safer recruitment processes and ongoing safer working practices. Members of the teaching and non-teaching staff at the School including part-time staff, temporary and supply staff, and visiting staff, such as musicians and sports coaches are subject to the necessary statutory child protection checks before starting work, for example, right to work checks, additional overseas checks (if necessary), verifying identity, taking up references, checking work history and confirming medical fitness for the role.

For most appointments, an enhanced DBS check with 'barred list' information will be appropriate. Under no circumstances will an individual commence work unsupervised in sole charge of, or in unaccompanied contact with, children without a cleared DBS check. In this case, the individual will have a separate Barred List check and the School will undertake a written Risk Assessment exercise in relation to the proposed work. All other safeguarding checks will be completed, and the individual will be appropriately supervised. Please refer to Section C and Appendix 5 of the 'Safeguarding Children – HR Procedural Guidance' available on the United Learning Hub for further guidance.

Applicants applying for employment or volunteering roles at Surbiton High School will be made aware that appropriate online searches may take place as part of our due diligence checks.

Full details of the School's safer recruitment procedures for checking the suitability of staff, members of the School LGB and Trustees of ULT and volunteers to work with children and young people is set out in:

- United Learning / the School's Recruitment and Selection Policy;
- United Learning's Safeguarding Children – HR Procedural Guidance;
- United Learning's LGB Handbook; and
- United Learning's guidance: Trustees - Recruitment, Appointment, and Removal Process

These documents are available on the United Learning Hub.

The School's protocols for ensuring that any visiting speakers, whether invited by staff or students themselves, are suitable and appropriately supervised is set out in the School's Recruitment and Selection Policy.



SURBITON

HIGH SCHOOL

Management of Safeguarding

The School's DSL is Jon Owen who is a member of the Senior Leadership Team.

Sinead Ross-Martyn is the DDSL and the person to whom reports should be made in the absence of the DSL. This ensures there is the required cover for the role at all times. David Williams is the DSL of the Girls' Prep and Sally Johnston the DSL of the Boys' Prep. Reports can also be given to the following ADSLs: Tracey Chong, Garnette Watts, Stuart Murphy, Louise McCabe-Arnold and Rosanna Palmer.

The DSL and DDSL's contact details can be found on the Key Contacts page at the start of this policy.

The DSL's role, alongside the Vice Principal Pastoral, is to take lead responsibility for safeguarding and child protection matters in the school (including online safety and understanding the filtering and monitoring systems and processes in place). The DSL and Vice Principal Pastoral will review alerts from the School's Smoothwall filtering system and follow up as appropriate. The DSL's responsibility is also to maintain an overview of safeguarding within the School, to open channels of communication with local statutory agencies, to liaise closely with safeguarding partners (such as children's social care and the police), support staff in carrying out their safeguarding duties and to monitor the effectiveness of the School's policies and procedures in practice. The DSL (and DDSL) are most likely to have a complete safeguarding picture and be the most appropriate people to advise on a response to a safeguarding concern.

The DSL works with the LGB to review and update the School's safeguarding policy. Where a student leaves the School, the DSL will also ensure their child protection file is transferred to the new school (separately from the main student file) as soon as possible. The DSL will ensure secure transit and obtain confirmation of receipt. The DSL will also consider if it would be appropriate to share any information with the new school in advance of a child leaving. For example, information that would allow the new school to continue supporting victims of abuse, who have a social worker, or who are receiving support through the Channel programme, and have that support in place for when the child arrives. The School will ensure that key staff, such as the SENCO, are also aware of these arrangements, as required.

The DSL will inform the safeguarding partners of any incident which they think should be considered for a child safeguarding practice review.

The DSL regularly reviews the School's and their own practices and concerns about welfare and safeguarding matters. This includes the personal and professional duty of all staff to report welfare and safeguarding concerns to the DSL, or in their absence, to a member of the senior management team or directly to local children's services.

The DSL, Deputy DSL or ADSL will always be available to discuss safeguarding concerns. During term time, the DSL, DDSL/ADSL will always be available (during school hours) for staff in the School to discuss any safeguarding concerns. For out of hours/out of term activities, the School's arrangements are as follows and in order:

1. Contact Jon Owen on the following number: 020 8439 1505. This should be followed with an e-mail to jon.owen@surbitonhigh.com
2. In an emergency and if unable to get hold of Jon Owen telephone Kingston Local Safeguarding Partner's Single Point of Access on 0208 547 5008 for an OUT OF HOURS EMERGENCY



SURBITON

HIGH SCHOOL

telephone the Local Safeguarding Partners Duty Team TEL: 0207 770 5000 or the Police on 999.

Full details of the DSL's role can be found at Annex C of *KCSIE*.

Ultimate lead responsibility for safeguarding and child protection remains with the DSL and this responsibility should not be delegated.

Training

Induction and training (including online safety, which amongst other things includes an understanding of the expectations, applicable roles and responsibilities in relation to filtering and monitoring) are in line with advice from local safeguarding partners.

All Staff

All new staff* will be provided with induction training that includes:

- Safeguarding and child protection, including online safety
- the child protection policy, including information about the identity and role of the DSL(s), DDSL and ADSL.
- the behaviour policy (which should include measures to prevent bullying, including cyberbullying, prejudice-based and discriminatory bullying)
- the safeguarding response to children who go missing from education
- the staff code of conduct including the School's whistleblowing procedure and the acceptable use of technologies policy, staff/student relationships and communications including the use of social media
- a copy of Part 1 of *KCSIE 2023*
- School leaders and staff who work directly with children will also be required to read Annex B of *KCSIE*
- Induction training will take place before they are left to work unsupervised. Copies of the above documents are provided to all 'staff' during induction. On appointment and as part of United Learning Annual Declaration, all staff will receive and sign the up-to-date versions of the Staff Student Relationship Letter and Acceptable Use Declaration. The staff code of conduct can be found in the Staff Handbook, a copy of which is available in the Common Documents Area of the MIS.
- Temporary staff and volunteers are provided with appropriate safeguarding information including how to report any concerns they may have.

As part of the whole-school safeguarding approach, all staff are also required to:

- Read Part One of *KCSIE* and confirm that they have done so by signing the 'Staff Student Relationships Form, at the start of each academic year or as necessary upon employment
- Each time Part One of *KCSIE* is updated by the Department for Education, staff will be updated on the changes via staff briefings and a briefing paper e-mailed to School e-mail accounts.



SURBITON

HIGH SCHOOL

- Understand key information contained in Part One of *KCSIE*. The School will ensure staff understanding by asking all staff to complete an on-line quiz upon induction and as appropriate. Where it is clear the document is not understood (a score of less than 90%) School staff will be asked to meet with the DSL, DDSL or an ASDL.
- Receive training in safeguarding and child protection regularly, in line with advice from the local safeguarding partners. Training will include online safety and harmful sexual behaviours including sexual violence and sexual harassment between children. It will also include Prevent awareness training to equip staff to raise concerns appropriately by ensuring all staff have the knowledge and confidence to identify children at risk of being drawn into terrorism; are able to challenge extremist ideas; and know how to refer children and young people for further help. All staff will also be made aware of the local early help process and understand their role in it.
- Undertake regular informal updates, at least annually, to provide them with relevant skills and knowledge to safeguard children effectively. The School provides these via, for example, emails, e-bulletins and staff meetings.

DSL(s) - Designated Safeguarding Lead (s)

The DSL receives updated child protection training at least every two years to provide them with the knowledge, skills and authority required to carry out the role. This includes local inter-agency working protocols, participation in child protection case conferences, supporting children in need, identifying children at risk of radicalisation, supporting SEND children particularly when online, overseeing online safety in school, record keeping and promoting a culture of listening to children, training in the local safeguarding partners approach to *Prevent* duties and harmful sexual behaviours. Further details of the required training content for the DSL are set out in Annex C of *KCSIE*.

In addition to their formal training, the DSL's knowledge and skills are updated at least annually to keep up with any developments relevant to their role.

The DDSL and ADSLs are trained to the same level as the DSL (in line with the Local Safeguarding Partners safeguarding requirements).

*Whilst external catering and maintenance staff are not technically United Learning/School employees (and therefore safeguarding training is not the responsibility of the School), they should receive an appropriate safeguarding induction to ensure they are aware of and understand all the School's relevant safeguarding policies (e.g. safeguarding policy/whistleblowing policy).

Governors and Trustees

All governors and trustees must receive appropriate safeguarding and child protection (including online) training at induction. This training should equip them with the knowledge to provide strategic challenge to test and assure themselves that the safeguarding policies and procedures in place are effective and support the delivery of a robust whole-school approach to safeguarding. This training should be regularly updated.

All governors (and proprietors) should be aware of their obligations under the Human Rights Act 1998 and, the Equality Act 2010 and their local multi-agency safeguarding arrangements.



SURBITON

HIGH SCHOOL

Oversight of safeguarding, including arrangements for reviewing policies and procedures

Reena Keeble is the board-level lead designated to take a lead in relation to responsibility for the Trust's safeguarding arrangements. Gerry Holden is the LGB lead designated to take a lead in relation to responsibility for the safeguarding arrangements in the School. He is a member of the School's LGB.

A review of the School's child protection policies takes place at least annually, including an update and review of the effectiveness of procedures and their implementation.

This is done by the DSL in collaboration with the LGB. The Local Safeguarding Partners' Safeguarding Audit tool (Section 11) is also completed, and a copy given to the Local Safeguarding Partners. The School draws on the expertise of staff, including the DSL(s), in shaping the School's safeguarding arrangements and policies.

If there has been a substantiated allegation against a member of staff, the School will work with the Local Authority designated officer to determine whether there are any improvements to be made to the School's procedures or practice to help prevent similar events in the future.

The School's arrangements to fulfil other safeguarding responsibilities

Teaching children how to keep safe

The local governing body via the Senior Leadership Team ensures that all students are taught about safeguarding, including online, through the curriculum, Relationships and Sex Education and Health Education and PSHE to help children to adjust their behaviours to reduce risks and build resilience, including to radicalisation. This includes teaching students about the safe use of electronic equipment and the internet, and the risks posed by adults or young people, who use the internet and social media to bully, groom, abuse or radicalise other people, especially children, young people and vulnerable adults. It will also include teaching students, for example, about healthy relationships, consent and that sexual violence and sexual harassment is always wrong.

The School recognises the additional risks that children with SEND face online and works with the Head of Learning Enrichment to ensure that additional support and measures are in place to support these children.} Online safety is an integral part of the School's ICT curriculum for all pupils and is taught in an age-appropriate way relevant to pupils' lives. It is essential that children are safeguarded from potentially harmful and inappropriate online material. A whole-school approach is taken to online safety in the Behaviour Policy and ICT Acceptable use policy, which empower the School to protect and educate pupils, students, and staff in their use of technology and establishes mechanisms to identify, intervene in, and escalate any concerns where appropriate.

It is also embedded in PSHE and Relationships and Sex Education. Pupils will be taught what positive, healthy and respectful online relationships look like; the effects of their online actions on others; how to recognise and display respectful behaviour online; how to use technology safely, responsibly and securely; and where to go for help and support when they have concerns.

The School has appropriate filters and monitoring systems in place to safeguard children from potentially harmful and inappropriate material online. The School systems used to protect students



SURBITON

HIGH SCHOOL

and staff online are a Smoothwall UTM appliance, providing internet access filtering and monitoring, and Microsoft Office 365 and Barracuda Email Security, providing email security filtering and applying rules to ensure students can send and receive appropriate email. Such systems aim to reduce the risk of children being exposed to illegal, inappropriate, and harmful materials online; reduce the risk of children being subjected to harmful online interaction with others; and help manage online behaviour that can increase a child's likelihood of, or causes, harm.

The leadership team and relevant staff must have an awareness and understanding of the filtering and monitoring provisions in place and manage them effectively. Where there is a concern regarding a pupil's on-line activity, this should be treated as a safeguarding concern and reported accordingly.

The School will communicate with parents and carers to reinforce the importance of children being safe online and to help them understand what systems schools and colleges use to filter and monitor online use. It will be especially important for the School to make parents and carers aware of what their children are being asked to do online, including the sites they will be asked to access and be clear who from the School (if anyone) their child is going to be interacting with online.

Further detail of the School's approach to online safety can be found in United Learning E-Safety Policy (available on the United Learning Hub) and ICT Acceptable Use Policy and the Mobile Digital Devices Policy which also includes detail on the use of mobile technology in School (and accessing 3G and 4G technology on School premises) and the School's IT arrangements to ensure that children are safe from terrorist and extremist material when accessing the internet through the School's systems.

Looked after children (and previously looked after children)

Looked after children (and previously looked after children) are a particularly vulnerable group. The School will ensure that prompt action is taken when necessary to safeguard these children and the local governing body OR United Learning Trust ensures that staff have the skills, knowledge and understanding necessary to keep safe any children on roll who are looked after (and previously looked after) by a local authority.

Jon Owen is the designated member of teaching staff who has responsibility for their welfare and progress and to ensure that the needs identified in personal education plans are met. The School ensures that the designated member of staff receives appropriate training to carry out their role and has the information they need in relation to any child's looked after status, their care arrangements (including contact arrangements with birth parents and those with parental responsibility) and details of the child's social worker and virtual school head.

The designated member of staff will also have responsibility for promoting the educational achievement of children who have left care through adoption, special guardianship or child arrangement orders or who were adopted from state care and will work closely with virtual school heads to promote their educational achievement. The DSL will ensure they have details of the local authority Personal Advisor appointed to guide and support any care leavers and will liaise with them as necessary regarding any issues of concern affecting them.



SURBITON

HIGH SCHOOL

Children potentially at greater risk of harm (Children who need a social worker - Child in Need and Child Protection Plans)

Children may need a social worker due to safeguarding or welfare needs. Children may need this help due to abuse, neglect and complex family circumstances. A child's experiences of adversity and trauma can leave them vulnerable to further harm, as well as educationally disadvantaged in facing barriers to attendance, learning, behaviour and mental health.

Where the local authority has made the School aware a child has a social worker, the designated safeguarding lead will hold and use this information so that decisions can be made in the best interests of the child's safety, welfare and educational outcomes.

This information will inform decisions about safeguarding (for example, responding to unauthorised absence or missing education where there are known safeguarding risks) and about promoting welfare (for example, considering the provision of pastoral and/or academic support, alongside action by statutory services).

Use of 'reasonable force'

There are circumstances when it is appropriate for staff to use reasonable force to safeguard children. The School recognises the additional vulnerability when using reasonable force in response to risks presented by incidents involving children with SEND, mental health or with medical conditions. The School will consider its duties under the Equality Act 2010. Positive and proactive behaviour support, for instance through drawing up individual behaviour plans for more vulnerable children and agreeing them with parents and carers can reduce the occurrence of challenging behaviour and the need to use reasonable force.

The School has a use of Physical Restraint (Use of Reasonable Force) policy which can be found via MIS Common Documents.

Arrangements for Visiting Speakers

The School has clear protocols for ensuring that any visiting speakers are appropriately supervised and suitable. The School's responsibility to students is to ensure that they can critically assess the information they receive as to its value to themselves, and that the information is aligned to the ethos and values of the School and British values.

The School is required to undertake a risk assessment before agreeing to a Visiting Speaker being allowed to attend the School. This will take into account any vetting requirements considered appropriate in the circumstances and may include a DBS check if relevant.

Visiting speakers will be expected to understand that, where appropriate, their session should actively promote the British values of democracy, the rule of law, individual liberty and mutual respect and tolerance of those with different faiths and beliefs and at no point undermine these. In some cases, the School may request a copy of the Visiting Speaker's presentation and/or footage in advance of the session being provided.

Visiting Speakers, whilst on the School site, will be supervised by a School employee. On attending the School, Visiting Speakers will be required to show original current identification documents including



SURBITON

HIGH SCHOOL

a photograph such as a passport or photo card driving licence. The School shall also keep a formal register of visiting speakers retained in line with its Data Protection Policy.

Visiting speakers are, for the most part, engaged in non-regulated activity and will not, therefore appear on the SCR.

When regular speakers of different faith carry out regular assemblies on a rota, they will be included as this activity is classified as 'regulated' and the visitor may have access to children on their own if the children wished to speak with them about a particular issue. When this is the case, the School will undertake a DBS check.

For occasional speakers not involved in regulated activity, the School make appropriate checks on visiting speakers, e.g., a google search and asking for a copy of what is being presented or clarification on content, prior to their arrival. The member of staff inviting the speaker into School will be responsible for undertaking such checks. At all times, as appropriate, visitors will be supervised by a member of staff. All visitors are expected to sign in and out at the School's reception.

Where there is any concern regarding the speaker or the contents of the talk, the Vice Principal should be consulted. Where it is thought that the contents of a talk by a visiting speaker might be controversial, his or her details, including a note of the checks made, are added to a log of visiting speakers kept by the Vice-Principal. This log includes:

1. Date of the talk
2. The name of the speaker
3. The organisation they are representing (if applicable)
4. The theme of the talk
5. The Year groups invited to listen
6. The member of staff organising the talk
7. Checks made on the individual
8. SLT authorisation

Use of school or college premises for non-school/college activities

Where governing bodies or proprietors hire or rent out School facilities/premises to organisations or individuals (for example to community groups, sports associations, and service providers to run community or extra-curricular activities) they will ensure that appropriate arrangements are in place to keep children safe.

When services or activities are provided by the governing body or proprietor, under the direct supervision or management of their School or college staff, their arrangements for child protection will apply. However, where services or activities are provided separately by another body this is not necessarily the case. The governing body or proprietor will therefore seek assurance that the body concerned has appropriate safeguarding and child protection policies and procedures in place (including inspecting these as needed); and ensure that there are arrangements in place to liaise with the School on these matters where appropriate. This applies regardless of whether or not the children who attend any of these services or activities are children on the School roll. The governing



SURBITON

HIGH SCHOOL

body or proprietor will also ensure safeguarding requirements are included in any transfer of control agreement (i.e., lease or hire agreement), as a condition of use and occupation of the premises; and that failure to comply with this would lead to termination of the agreement.

Early Years provision safeguarding arrangements

Disqualification from working in childcare

Where staff work in, or are involved in the management of, the School's early years or provision of care of students under the age of eight, the School will take steps to check whether those staff are disqualified under the Childcare Act 2006. These checks will be undertaken pre-appointment, and from time to time during employment. This forms part of the School's safer recruitment practices, further details of which can be found in the School's Recruitment and Selection Policy.

The School records all checks of staff employed to work in or manage relevant childcare on the Single Central Register. This includes the date disqualification checks were completed.

Where a member of staff is found to be disqualified or if there is doubt over that issue then, pending resolution, the School will remove them from the work from which they are or may be disqualified. Suspension or dismissal will not be an automatic response; the School will consider if there is scope in principle to redeploy them with other age groups or in other work from which they are not disqualified, subject to assessing the risks and taking advice from the designated officer when appropriate.

Use of mobile phones and cameras

The School's policy on the use of mobile phones and cameras in the setting can be found in the Social Media Policy, the ICT Acceptable Use Policy, and the Staff Code of Conduct. For this policy's purposes, the summary points are:

Staff are not permitted to use their personal mobile devices School for the purpose of taking pictures or recording videos of children at School or members of staff; this includes when off-site.

Staff who wish to use take photographs or video of students (from their School device) must wherever practicable and possible:

- seek the consent of pupils to take photographs or publish them. Image consent forms are circulated to new starters as part of the terms and conditions of joining the School;
- seek parental consent;
- use only the pupil's first name with an image;
- ensure that pupils are appropriately dressed;
- encourage pupils to tell us if they are worried about any photographs that are taken of them.
- Early Years and Technology: Children have their photographs taken to provide evidence of their achievements for developmental records (The Early Years Foundation Stage, EYFS 2014). Staff, visitors, volunteers and students are not permitted to use their own



SURBITON

HIGH SCHOOL

mobile phones to take or record any images of children for their own records during session times.

All EYFS staff are also referred to United Learning E-Safety Policy (available on the United Learning Hub).

DSL for the EYFS

The practitioner designated to take lead responsibility for safeguarding children in the early years setting in the Boys' Prep is Sally Johnston.

The practitioner designated to take lead responsibility for safeguarding children in the early years setting in the Girls' Prep is Rosanna Palmer.

Duty to notify/report to Ofsted a serious childcare incident

The School will inform Ofsted of any significant event which is likely to affect the suitability of any person who is in regular contact with children on the premises where childcare is provided. For example, where the School is satisfied that a person working in a relevant setting falls within one of the disqualification criteria. Any significant event must be notified to Ofsted as soon as reasonably practicable, but at the latest within 14 days of the date the School became aware (or ought reasonably to have become aware) of it.

The School will notify Ofsted within 14 days of any allegations of serious harm or abuse by any person living, working or looking after children at the premises (whether the allegations relate to harm or abuse committed on the premises or elsewhere).

The School will notify Ofsted of any serious accident, illness or injury to, or death of, any child while in their care, and of the action taken. Notification must be made as soon as is reasonably practicable, but in any event within 14 days of the incident occurring. A registered provider, who, without reasonable excuse, fails to comply with this requirement, commits an offence. Providers must notify local child protection agencies of any serious accident or injury to, or the death of, any child while in their care, and must act on any advice from those agencies.

Waiver from Disqualification

In certain circumstances, a person who is disqualified from registration by Ofsted may apply to Ofsted for a waiver of disqualification unless, for example, they are barred from working with children.]

Police attendance on school site (Statutory Guidance – PACE Code C 2019)

Students may only be interviewed at their place of education in exceptional circumstances and only when the principal or their nominee agrees. Every effort will be made to notify the parent(s) or other person responsible for the student's welfare and the appropriate adult, if this is a different person, that the police want to interview the student and reasonable time will be allowed to enable the appropriate adult to be present at the interview. If awaiting the appropriate adult would cause unreasonable delay, and unless the student is suspected of an offence against the educational



SURBITON

HIGH SCHOOL

establishment, the principal or their nominee will act as the appropriate adult for the purposes of the interview.



SURBITON

HIGH SCHOOL

Appendix 1 – Further information

All staff should be aware of indicators of abuse and neglect, as well as specific safeguarding issues such as child criminal exploitation and child sexual exploitation. Staff should always be vigilant, and if unsure, should **always** speak to the DSL or DDSL.

All School staff should be aware that abuse, neglect and safeguarding issues are rarely standalone events that can be covered by one definition or label. They can occur from within or outside families, in or out of School, from other children within peer groups or the wider community and/or online. In most cases, multiple issues will overlap with one another, and children can therefore be vulnerable to multiple threats.

All staff should be aware that behaviours linked to drug taking and/or alcohol misuse, deliberately missing education and consensual and non-consensual sharing of nude and semi-nude images and/or videos can be signs that children are at risk.

Physical abuse: a form of abuse which may involve hitting, shaking, throwing, poisoning, burning or scalding, drowning, suffocating or otherwise causing physical harm to a child. Physical harm may also be caused when a parent or carer fabricates the symptoms of, or deliberately induces, illness in a child.

Emotional abuse: the persistent emotional maltreatment of a child such as to cause severe and adverse effects on the child's emotional development. It may involve conveying to a child that they are worthless or unloved, inadequate, or valued only insofar as they meet the needs of another person. It may include not giving the child opportunities to express their views, deliberately silencing them or 'making fun' of what they say or how they communicate. It may feature age or developmentally inappropriate expectations being imposed on children. These may include interactions that are beyond a child's developmental capability as well as overprotection and limitation of exploration and learning or preventing the child participating in normal social interaction. It may involve seeing or hearing the ill-treatment of another. It may involve serious bullying (including cyberbullying), causing children frequently to feel frightened or in danger, or the exploitation or corruption of children. Some level of emotional abuse is involved in all types of maltreatment of a child, although it may occur alone. Staff are referred to DfE guidance Sexual Violence and Sexual Harassment for further information.

Sexual abuse: involves forcing or enticing a child or young person to take part in sexual activities, not necessarily involving a high level of violence, whether or not the child is aware of what is happening. The activities may involve physical contact, including assault by penetration (for example rape or oral sex) or non-penetrative acts such as masturbation, kissing, rubbing and touching outside of clothing. They may also include non-contact activities, such as involving children in looking at, or in the production of, sexual images, watching sexual activities, encouraging children to behave in sexually inappropriate ways, or grooming a child in preparation for abuse. Sexual abuse can take place online, and technology can be used to facilitate offline abuse. Sexual abuse is not solely perpetrated by adult males. Women can also commit acts of sexual abuse, as can other children. The sexual abuse of children by other children (also known as child-on-child abuse) is a specific safeguarding issue in education and **all** staff should be aware of it and of the School's policy and procedures for dealing with it.



SURBITON

HIGH SCHOOL

Neglect: the persistent failure to meet a child's basic physical and/or psychological needs, likely to result in the serious impairment of the child's health or development. Neglect may occur during pregnancy as a result of maternal substance abuse. Once a child is born, neglect may involve a parent or carer failing to: provide adequate food, clothing and shelter (including exclusion from home or abandonment); protect a child from physical and emotional harm or danger; ensure adequate supervision (including the use of inadequate caregivers); or ensure access to appropriate medical care or treatment. It may also include neglect of, or unresponsiveness to, a child's basic emotional needs.

Specific safeguarding issues: behaviours linked to drug taking, alcohol abuse, truancy and sexting put children in danger. Safeguarding issues can also manifest themselves via child-on-child abuse, such as bullying (including cyberbullying), gender-based violence/sexual assaults and sexting. Safeguarding issues can also be linked to, for example, children missing education; child sexual exploitation; domestic abuse; fabricated or induced illness; faith abuse; female genital mutilation; forced marriage; gangs and youth violence; gender-based violence / violence against women and girls; hate; mental health; preventing radicalisation; relationship abuse; sexting; and trafficking.

Child Criminal Exploitation (CCE) and Child Sexual Exploitations: are forms of abuse and both occur where an individual or group takes advantage of an imbalance in power to coerce, manipulate or deceive a child into sexual or criminal activity. Whilst age may be the most obvious, this power imbalance can also be due to a range of other factors including gender, sexual identity, cognitive ability, physical strength, status, and access to economic or other resources. In some cases, the abuse will be in exchange for something the victim needs or wants and/or will be to the financial benefit or other advantage (such as increased status) of the perpetrator or facilitator. The abuse can be perpetrated by individuals or groups, males or females, and children or adults. CSE and CCE can affect children, both male and female, and can include children who have been moved (commonly referred to as trafficking) for the purpose of exploitation. The abuse can be a one-off occurrence or a series of incidents over time and range from opportunistic to complex organised abuse. It can involve force and/or enticement-based methods of compliance and may, or may not, be accompanied by violence or threats of violence. Victims can be exploited even when activity appears consensual, and it should be noted exploitation as well as being physical can be facilitated and/or take place online.

More information can be found at:

[Multi-agency practice principles for responding to child exploitation and extra-familial harm](#)

Non-statutory guidance for local areas, developed by the Tackling Child Exploitation (TCE) Support Programme, funded by the Department for Education and supported by the Home Office, the Department for Health and Social Care and the Ministry of Justice

Child Criminal Exploitation (CCE): Some specific forms of CCE can include children being forced or manipulated into transporting drugs or money through county lines, working in cannabis factories, shoplifting, or pickpocketing. They can also be forced or manipulated into committing vehicle crime or threatening/committing serious violence to others.

Children can become trapped by this type of exploitation as perpetrators can threaten victims (and their families) with violence or entrap and coerce them into debt. They may be coerced into carrying



SURBITON

HIGH SCHOOL

weapons such as knives or begin to carry a knife for a sense of protection from harm from others. As children involved in criminal exploitation often commit crimes themselves, their vulnerability as victims is not always recognised by adults and professionals, (particularly older children), and they are not treated as victims despite the harm they have experienced. They may still have been criminally exploited even if the activity appears to be something they have agreed or consented to.

It is important to note that the experience of girls who are criminally exploited can be very different to that of boys. The indicators may not be the same, however professionals should be aware that girls are at risk of criminal exploitation too. It is also important to note that both boys and girls being criminally exploited may be at higher risk of sexual exploitation.

Child Sexual Exploitation (CSE): CSE is a form of sexual abuse. It occurs where an individual or group takes advantage of an imbalance of power to coerce, manipulate or deceive a child or young person under the age of 18 into sexual activity (a) in exchange for something the victim needs or wants, and/or (b) for the financial advantage or increased status of the perpetrator or facilitator. The victim may have been sexually exploited even if the sexual activity appears consensual. CSE does not always involve physical contact: it can also occur through the use of technology.

CSE can affect any child or young person (male or female) under the age of 18 years, including 16 and 17 year olds who can legally consent to have sex; can still be abuse even if the sexual activity appears consensual; can include both contact (penetrative e.g. rape and oral sex and non-penetrative acts such as masturbation, kissing, rubbing, and touching outside clothing) and non-contact sexual activity (such as involving children in the production of sexual images, forcing children to look at sexual images or watch sexual activities, encouraging children to behave in sexually inappropriate ways or grooming a child in preparation for abuse including via the internet. It can take place in person or via technology, or a combination of both; can involve force and/or enticement-based methods of compliance and may, or may not, be accompanied by violence or threats of violence; may occur without the child or young person's immediate knowledge (e.g. through others copying videos or images they have created and posted on social media); can be perpetrated by individuals or groups, males or females, and children or adults.

The abuse can be a one-off occurrence or a series of incidents over time and range from opportunistic to complex organised abuse; and is typified by some form of power imbalance in favour of those perpetrating the abuse. Whilst age may be the most obvious, this power imbalance can also be due to a range of other factors including gender, sexual identity, cognitive ability, physical strength, status, and access to economic or other resources. Some of the following signs may be indicators of sexual exploitation:

- Children who appear with unexplained gifts or new possessions;
- Children who associate with other young people involved in exploitation;
- Children who have older boyfriends or girlfriends;
- Children who suffer from sexually transmitted infections or become pregnant;
- Children who suffer from changes in emotional well-being;
- Children who misuse drugs and alcohol;
- Children who go missing for periods of time or regularly come home late; and
- Children who regularly miss school or education or do not take part in education.

CSE is a geographically widespread form of harm that is a typical **feature of county lines** criminal activity: drug networks or gangs groom and exploit children and young people to carry drugs and



SURBITON

HIGH SCHOOL

money from urban areas to suburban and rural areas, market and seaside towns. Key to identifying potential involvement in county lines are missing episodes when the victim may have been trafficked for the purpose of drugs trafficking. The DSL or DDSL will consider a referral to the National Referral Mechanism as soon as possible if there are county line concerns, such as a child being a potential victim of modern slavery or human trafficking.

All staff should be aware of indicators, which may signal that children are at risk from, or are involved with **serious violent crime**. These may include increased absence from school, a change in friendships or relationships with older individuals or groups, a significant decline in performance, signs of self-harm or a significant change in wellbeing, or signs of assault or unexplained injuries. Unexplained gifts or new possessions could also indicate that children have been approached by, or are involved with, individuals associated with criminal networks or gangs and may be at risk of criminal exploitation.

All staff should be aware of the range of risk factors which increase the likelihood of involvement in serious violence, such as being male, having been frequently absent or permanently excluded from school, having experienced child maltreatment and having been involved in offending, such as theft or robbery.

If staff have a concern about a child or a child makes a report to a member of staff, staff should follow the referral process in this policy. If staff are in any doubt about what to do, they should speak to the DSL or DDSL.

County lines: County lines is a term used to describe gangs and organised criminal networks involved in exporting illegal drugs (primarily crack cocaine and heroin) into one or more importing areas [within the UK], using dedicated mobile phone lines or other form of “deal line”.

Exploitation is an integral part of the county lines offending model with children and vulnerable adults exploited to move [and store] drugs and money. Offenders will often use coercion, intimidation, violence (including sexual violence) and weapons to ensure compliance of victims. Children can be targeted and recruited into county lines in a number of locations including schools (mainstream and special), further and higher educational institutions, pupil referral units, children’s homes and care homes. Children are often recruited to move drugs and money between locations and are known to be exposed to techniques such as ‘plugging’, where drugs are concealed internally to avoid detection. Children can easily become trapped by this type of exploitation as county lines gangs create drug debts and can threaten serious violence and kidnap towards victims (and their families) if they attempt to leave the county lines network.

One of the ways of identifying potential involvement in county lines are missing episodes (both from home and school), when the victim may have been trafficked for the purpose of transporting drugs and a referral to the National Referral Mechanism should be considered. If a child is suspected to be at risk of or involved in county lines, a safeguarding referral should be considered alongside consideration of availability of local services/third sector providers who offer support to victims of county lines exploitation.

The Home Office have provided further information in the document below:

https://assets.publishing.service.gov.uk/government/uploads/system/uploads/attachment_data/file/863323/HOCountyLinesGuidance_-_Sept2018.pdf



SURBITON

HIGH SCHOOL

So called 'Honour Based' Abuse: encompasses crimes which have been committed to protect or defend the honour of the family and/or the community, including Female Genital Mutilation (FGM), forced marriage, and practices such as breast ironing. It can include multiple perpetrators.

FGM comprises all procedures involving partial or total removal of the external female genitalia or other injury to the female genital organs. Guidance on the warning signs that FGM may be about to take place, or may have already taken place, can also be found on pages 38-41 of the multi-agency statutory guidance on FGM.

If staff have a concern that a student may be at risk of HBA or has suffered HBA, they should speak to the DSL (or DDSL). As appropriate they will activate local safeguarding procedures, using existing national and local protocols for multi-agency liaison with Police and Children's Social Care.

There is a statutory duty on teachers to personally report to the Police where they **discover** (either through disclosure by the victim or visual evidence) that FGM appears to have been carried out on a girl under 18. Unless the teacher has a good reason not to, they should still consider and discuss any such case with the DSL and involve children's social care as appropriate. If the teacher is unsure whether this reporting duty applies, they should discuss their concerns with the DSL in accordance with this policy. Where a teacher suspects that a student is at risk (i.e. where the teacher does not discover that an act of FGM appears to have been carried out, either through disclosure by the victim or visual evidence) or it involves a student over 18, teachers should follow the School's local safeguarding procedures.]

Forced Marriage: Forcing a person into a marriage is a crime in England and Wales. A forced marriage is one entered into without the full and free consent of one or both parties and where violence, threats or any other form of coercion is used to cause a person to enter into a marriage. Threats can be physical or emotional and psychological. A lack of full and free consent can be where a person does not consent or where they cannot consent (if they have learning disabilities, for example). Nevertheless, some communities use religion and culture as a way to coerce a person into marriage. Schools can play an important role in safeguarding children from forced marriage.

The Forced Marriage Unit (FMU) has created: Multi-agency practice guidelines: handling cases of forced marriage (pages 75-80 of which focus on the role of schools and colleges) and, Multi-agency statutory guidance for dealing with forced marriage, which can both be found at: <https://www.gov.uk/government/publications/the-right-to-choose-government-guidance-on-forced-marriage> . School and college staff can contact the Forced Marriage Unit if they need advice or information: Contact: 020 7008 0151 or email fmu@fcdo.gov.uk.

In addition, since February 2023 it has also been a crime to carry out any conduct whose purpose is to cause a child to marry before their eighteenth birthday, even if violence, threats or another form of coercion are not used. As with the existing forced marriage law, this applies to non-binding, unofficial 'marriages' as well as legal marriages.

Preventing Radicalisation and Extremism:

The Prevent Duty for England and Wales (2015) under section 26 of the Counterterrorism and Security Act 2015 places a duty on education and other children's services to have due regard to the



SURBITON

HIGH SCHOOL

need to prevent people from being drawn into terrorism. This duty is known as the Prevent duty. [The Guidance was revised in April 2021.](#)

Extremism is defined as ‘vocal or active opposition to fundamental British values, including democracy, the rule of law, individual liberty and mutual respect and tolerance of different faiths and beliefs. We also include in our definition of extremism calls for the death of members of our armed forces, whether in this country or overseas. [\(Revised Prevent Duty Guidance for England and Wales 10 April 2019\).](#)

Radicalisation refers to the process by which a person comes to support terrorism and extremist ideologies associated with terrorist groups.

Terrorism is an action that endangers or causes serious violence to a person/people; causes serious damage to property; or seriously interferes or disrupts an electronic system. The use or threat **must** be designed to influence the government or to intimidate the public and is made for the purpose of advancing a political, religious or ideological cause.

Some children are at risk of being radicalised; adopting beliefs and engaging in activities which are harmful, criminal or dangerous. This can happen both online and offline.

Surbiton High School is clear that exploitation of vulnerable children and radicalisation should be viewed as a safeguarding concern and follows the Department for Education guidance for schools and childcare providers on preventing children and young people from being drawn into terrorism.

The School seeks to protect children and young people against the messages of all violent extremism including, but not restricted to, those linked to Islamist ideology, or to Far Right / Neo Nazi / White Supremacist ideology, Irish Nationalist and Loyalist paramilitary groups, and extremist Animal Rights movements.

School staff undertake the Government’s on-line Prevent Duty training to help identify early signs of radicalisation and extremism. Opportunities are provided in the curriculum to enable pupils to discuss issues of religion, ethnicity and culture and the School follows the DfE advice [Promoting Fundamental British Values as part of SMSC \(spiritual, moral, social and cultural education\) in Schools \(2014\).](#)

Governors, the Principal and the designated safeguarding lead (DSL) will assess the level of risk within the School and put actions in place to reduce that risk. Risk assessment may include due diligence checks for external speakers and private hire of facilities, anti-bullying policy and other issues specific to the School’s profile, community and philosophy.

When any member of staff has concerns that a pupil may be at risk of radicalisation or involvement in terrorism, they should consider this a Safeguarding Concern and follow the School’s Safeguarding Policy accordingly.

The DSL will then follow the safeguarding procedures and refer cases by via the Single Point of Access to Kingston Safeguarding Partner and via e-mail to prevent@kingston.gov.uk . If the matter is urgent, then Police must be contacted by dialling 999. In cases where further advice from the Police is sought dial 101 or contact the Anti-terrorism hotline on 0800 789 321.

The Department for Education has also set up a dedicated telephone helpline for staff and governors to raise concerns around Prevent (020 7340 7264).



SURBITON

HIGH SCHOOL

Indicators of vulnerability to radicalisation

Radicalisation refers to the process by which a person comes to support terrorism and forms of extremism leading to terrorism. Extremism is defined by the Crown Prosecution Service as the demonstration of unacceptable behaviour by using any means or medium to express views which:

- Encourage, justify or glorify terrorist violence in furtherance of beliefs,
- Seek to provoke others to terrorist acts;
- Encourage other serious criminal activity or seek to provoke others to serious criminal acts;
or
- Foster hatred which might lead to inter-community violence in the UK.

There is no such thing as a “typical extremist”: those who become involved in extremist actions come from a range of backgrounds and experiences, and most individuals, even those who hold radical views, do not become involved in violent extremist activity.

Pupils may become susceptible to radicalisation through a range of social, personal and environmental factors - it is known that violent extremists exploit vulnerabilities in individuals to drive a wedge between them and their families and communities. It is vital that School staff can recognise those vulnerabilities.

Indicators of vulnerability include:

- Identity Crisis – the pupil is distanced from their cultural / religious heritage and experiences discomfort about their place in society.
- Personal Crisis – the pupil may be experiencing family tensions; a sense of isolation; and low self-esteem; they may have dissociated from their existing friendship group and become involved with a new and different group of friends; they may be searching for answers to questions about identity, faith and belonging;
- Personal Circumstances – migration; local community tensions; and events affecting the pupil’s country or region of origin may contribute to a sense of grievance that is triggered by personal experience of racism or discrimination or aspects of Government policy.
- Unmet Aspirations – the pupil may have perceptions of injustice or a feeling of failure.
- Experiences of Criminality – which may include involvement with criminal groups, imprisonment, and poor resettlement/reintegration.
- Special Educational Needs and Disability – pupils may experience difficulties with social interaction, empathy with others, understanding the consequences of their actions and awareness of the motivations of others.

However, this list is not exhaustive, nor does it mean that all young people experiencing the above are at risk of radicalisation for the purposes of violent extremism. More critical risk factors could include:

- Being in contact with extremist recruiters.
- Accessing violent extremist websites, especially those with a social networking element.
- Possessing or accessing violent extremist literature.
- Using extremist narratives and a global ideology to explain personal disadvantage.
- Justifying the use of violence to solve societal issues.
- Joining or seeking to join extremist organisations.



SURBITON

HIGH SCHOOL

- Significant changes to appearance and/or behaviour.
- Experiencing a high level of social isolation resulting in issues of identity crisis and/or personal crisis

The Channel Programme

Channel is a programme which focuses on providing support at an early stage to people identified as being vulnerable to being drawn into terrorism. Vulnerable individuals are referred to a multi-agency panel which develops an appropriate support plan for them. Partners that sit on this panel include the local authority, the police, mental health services and other professionals who may be able to help such as housing services. The DSL represent the School on this Panel where a pupil has been referred and accepted onto the Programme.

Channel is about ensuring that vulnerable children and adults of any faith, ethnicity or background receive support before their vulnerabilities are exploited by those who might want them to embrace terrorism.

Channel support will vary depending on the need of the individual, their vulnerability, the level of risk and local resources. Support could be around life skills, careers or education, health awareness, housing support and ideological mentoring. This is all with the aim of providing vulnerable individuals with the skills they need to protect themselves from supporting terrorism or being drawn into terrorist-related activity.

Special Educational Needs and/or Disabilities or physical health issues: Students with SEND or certain health conditions can face additional safeguarding challenges. They may not outwardly show signs of abuse and/or may have difficulties in communication about abuse or neglect. Students with SEND are more likely to be abused by other children. The barriers to recognising abuse and neglect of this group of children can include:

- assumptions that indicators of possible abuse such as behaviour, mood and injury relate to the child's disability or health condition without further exploration;
- being more prone to peer group isolation than other children
- the potential for children with SEN and disabilities being disproportionately impacted by behaviours such as bullying, including prejudice-based bullying, without outwardly showing any signs; and
- communication barriers and difficulties in managing or reporting these challenges.

To address these additional challenges, the School has put in place the following pastoral support measures:

1. All pupils with SEN are recorded on MIS and teachers are aware of who they are.
2. Where appropriate, pupils will be allocated to a member of the Learning Enrichment (SEN) team.
3. Where there is a need for greater support than offered by the normal pastoral systems, the Mentor will work with the pupil.
4. The School Counsellor will work with SEN pupils as appropriate



SURBITON

HIGH SCHOOL

Further guidance can be found in the DfE guidance Supporting pupils at school with medical conditions, and where applicable in the SEND Code of Practice.

Staff will support such students in expressing any concerns they may have and will be particularly vigilant to any signs or indicators of abuse, discussing this with the DSL as appropriate. Any reports of abuse involving children with SEND will entail close liaison with the DSL or DDSL and named person with oversight for SEN.

Lesbian, Gay, Bi or Trans (LGBT): The fact that a child or a young person may be LGBT is not in itself an inherent risk factor for harm. However, children who are LGBT can be targeted by other children. In some cases, a child who is perceived by other children to be LGBT (whether they are or not) can be just as vulnerable as children who identify as LGBT.

Risks can be compounded where children who are LGBT lack a trusted adult with whom they can be open. Pupils at Surbiton High are encouraged to speak with their Tutor, Head of Year, a member of the Counselling Team or any other trusted adult to whom they can speak openly. Pupils can also contact the School via Toot Toot should they wish to seek advice on who to speak to. The RSE curriculum also incorporates LGBT issues along with advice on who pupils can talk to.

Children and the court system: Children are sometime required to give evidence in criminal courts, either for crimes committed against them or for crimes they have witnessed, and this will be stressful for them. Making child arrangements following separation can also be stressful and entrench conflict in families. Staff should be alert to the needs of such students and report any concerns to the DSL or DDSL in accordance with this policy.

Children who go missing from education or school: A child going missing is a potential indicator of a range of safeguarding possibilities, such as abuse or neglect. Whenever possible, the School holds more than one emergency contact number for each student so additional options are available to make contact with a responsible adult when a child goes missing is also identified as a welfare and/or safety concern.

Staff must follow the School's procedures for dealing with children who go missing, particularly on repeat occasions. The School's procedure for dealing with children who go missing can be found in School's Missing Pupils Policy. All unexplained or unauthorised absences will be followed up in accordance with this attendance procedures.

The School shall inform the local authority of any student who is going to be added to or deleted from the School's admission register at non-standard transition points in accordance with the requirements of the Education (Pupil Registration) (England) Regulations 2006 (as amended). This will assist the local authority to:

- a) fulfil its duty to identify children of compulsory school age who are missing from education; and
- b) follow up with any child who might be in danger of not receiving an education and who might be at risk of abuse, neglect or radicalisation.

School attendance registers are carefully monitored to identify any trends. The School will inform the local authority (and the local authority where the child is normally resident) of any student who fails to attend School regularly, or has been absent without the School's permission for a continuous period of 5 School days or more, at such intervals as are agreed between the School and the local authority



SURBITON

HIGH SCHOOL

Action should be taken in accordance with this policy if any absence of a student from the School gives rise to a concern about their welfare.

Children with family members in prison: Children who have a parent in prison are at risk of poor outcomes including poverty, stigma, isolation and poor mental health. Staff should be alert to the needs of such students and report any concerns to the DSL or DDSL in accordance with this policy.

Child abduction and community safety incidents: Child abduction is the unauthorised removal or retention of a minor from a parent or anyone with legal responsibility for the child. Child abduction can be committed by parents or other family members; by people known but not related to the victim (such as neighbours, friends and acquaintances); and by strangers.

Other community safety incidents in the vicinity of a school can raise concerns amongst children and parents, for example, people loitering nearby or unknown adults engaging children in conversation.

As children get older and are granted more independence (for example, as they start walking to school on their own) it is important they are given practical advice on how to keep themselves safe. Many schools provide outdoor-safety lessons run by teachers or by local police staff.

It is important that lessons focus on building children's confidence and abilities rather than simply warning them about all strangers. Further information is available at:

www.actionagainstabduction.org
and www.clevernevergoes.org.

Children in need: defined under the Children Act 1989 as a child who is unlikely to achieve or maintain a reasonable level of health or development, or whose health or development is likely to be significantly or further impaired, without the provision of services; or a child with a disability. Local authorities are required to provide services to safeguard or promote the welfare of children in need, and they may be assessed under s17 Children Act 1989.

Domestic abuse: Domestic abuse can encompass a wide range of behaviours and may be a single incident or a pattern of incidents. That abuse can be, but is not limited to, psychological, physical, sexual, financial or emotional. Children can be victims of domestic abuse. They may see, hear, or experience the effects of abuse at home and/or suffer domestic abuse in their own intimate relationships (teenage relationship abuse). All of which can have a detrimental and long-term impact on their health, well-being, development, and ability to learn.

Homelessness: Indicators that a family may be at risk of homelessness include household debt, rent arrears, domestic abuse and anti-social behaviour, as well as the family being asked to leave a property. The DSL or DDSL will raise/progress any concerns about homelessness with the Local Housing Authority although this does not replace a referral into children's social care where a child has been harmed or is at risk of harm.

Child-on-child abuse

Children can abuse other children. This is generally referred to as child-on-child abuse and can take many forms. This can include (but is not limited to):

- abuse within intimate partner relationships between children/peers;
- bullying (including cyberbullying) prejudice-based and discriminatory bullying;



SURBITON

HIGH SCHOOL

- sexual violence such as rape, assault by penetration and sexual assault (this may include an online element which facilitates, threatens and/or encourages sexual violence);
- sexual harassment such as sexual comments, remarks, jokes and online sexual harassment, which may be standalone or part of a broader pattern of abuse;
- Causing someone to engage in sexual activity without consent, such as forcing someone to strip, touch themselves sexually, or to engage in sexual activity with a third party;
- physical abuse such as hitting, kicking, shaking, biting, hair pulling, or otherwise causing physical harm (this may include an online element which facilitates, threatens and/or encourages physical abuse);
- consensual and non-consensual sharing nudes and semi-nudes images and videos (also known as sexting or youth produced sexual imagery);
- upskirting (see below);
- initiation/hazing type violence and rituals (this could include abuse or humiliation used as a way of initiating a person into a group or event including online).

It can happen both inside and outside school and online. It is important that all staff recognise the indicators and signs of child-on-child abuse, how to identify it and respond to reports. **Even if there are no reports in the school, this does not mean that it is not happening. Any concerns regarding child-on-child abuse must be referred to the DSL or DDSL.**

Sexual violence and sexual harassment between children in schools and colleges

Context

Sexual violence and sexual harassment can occur between two children of any age and sex. It can also occur through a group of children sexually assaulting or sexually harassing a single child or group of children.

Children who are victims of sexual violence and sexual harassment will likely find the experience stressful and distressing. This will, in all likelihood, adversely affect their educational attainment. Sexual violence and sexual harassment exist on a continuum and may overlap, they can occur online and offline (both physical and verbal) and are never acceptable.

It is important that **all** victims are taken seriously and offered appropriate support. Staff should be aware that some groups are potentially more at risk. Evidence shows girls, children with special educational needs and disabilities (SEND) and LGBT children are at greater risk.

Staff should be aware of the importance of:

- challenging inappropriate behaviours;
- making clear that sexual violence and sexual harassment is not acceptable, will never be tolerated and is not an inevitable part of growing up;
- not tolerating or dismissing sexual violence or sexual harassment as “banter”, “part of growing up”, “just having a laugh” or “boys being boys”; and
- challenging physical behaviours (potentially criminal in nature), such as grabbing bottoms, breasts and genitalia, pulling down trousers, flicking bras and lifting up skirts. Dismissing or tolerating such behaviours risks normalising them.



SURBITON

HIGH SCHOOL

What is sexual violence and sexual harassment?

Sexual violence

It is important that school staff are aware of sexual violence and the fact children can, and sometimes do, abuse other children in this way. When referring to sexual violence we are referring to sexual violence offences under the Sexual Offences Act 2003 as described below:

Rape: A person (A) commits an offence of rape if: he intentionally penetrates the vagina, anus or mouth of another person (B) with his penis, B does not consent to the penetration and A does not reasonably believe that B consents.

Assault by Penetration: A person (A) commits an offence if: s/he intentionally penetrates the vagina or anus of another person (B) with a part of her/his body or anything else, the penetration is sexual, B does not consent to the penetration and A does not reasonably believe that B consents.

Sexual Assault: A person (A) commits an offence of sexual assault if: s/he intentionally touches another person (B), the touching is sexual, B does not consent to the touching and A does not reasonably believe that B consents.

Causing someone to engage in sexual activity without consent: A person (A) commits an offence if: s/he intentionally causes another person (B) to engage in an activity, the activity is sexual, B does not consent to engaging in the activity, and A does not reasonably believe that B consents. This could be forcing someone to strip, touch themselves sexually, or to engage in sexual activity with a third party.

What is consent? Consent is about having the freedom and capacity to choose. Consent to sexual activity may be given to one sort of sexual activity but not another, e.g. to vaginal but not anal sex or penetration with conditions, such as wearing a condom. Consent can be withdrawn at any time during sexual activity and each time activity occurs. Someone consents to vaginal, anal or oral penetration only if s/he agrees by choice to that penetration and has the freedom and capacity to make that choice.

a child under the age of 13 can never consent to any sexual activity;

- the age of consent is 16;
- sexual intercourse without consent is rape.

Sexual harassment

When referring to sexual harassment we mean 'unwanted conduct of a sexual nature' that can occur online and offline. When we reference sexual harassment, we do so in the context of child-on-child sexual harassment. Sexual harassment is likely to: violate a child's dignity, and/or make them feel intimidated, degraded or humiliated and/or create a hostile, offensive or sexualised environment.

Whilst not intended to be an exhaustive list, sexual harassment can include:

- sexual comments, such as: telling sexual stories, making lewd comments, making sexual remarks about clothes and appearance and calling someone sexualised names;
- sexual "jokes" or taunting;
- physical behaviour, such as: deliberately brushing against someone, interfering with someone's clothes (schools should be considering when any of this crosses a line into sexual violence - it is important to talk to and consider the experience of the victim) and displaying pictures, photos or drawings of a sexual nature; and



SURBITON

HIGH SCHOOL

- online sexual harassment. This may be standalone, or part of a wider pattern of sexual harassment and/or sexual violence. It may include:
 - non-consensual sharing of nude and semi-nude images and videos;
 - sexualised online bullying;
 - unwanted sexual comments and messages, including, on social media;
 - sexual exploitation; coercion and threats; and
 - upskirting.

Upskirting

The Voyeurism (Offences) Act 2019, which is commonly known as the Upskirting Act, came into force on 12 April 2019. ‘Upskirting’ is where someone takes a picture under a person’s clothing (not necessarily a skirt) without their permission and or knowledge, with the intention of viewing their genitals or buttocks (with or without underwear) to obtain sexual gratification, or cause the victim humiliation, distress or alarm. It is a criminal offence. Anyone of any sex, can be a victim.

The response to a report of sexual violence or sexual harassment

The initial response to a report from a child is important. It is essential that all victims are reassured that they are being taken seriously and that they will be supported and kept safe. A victim should never be given the impression that they are creating a problem by reporting sexual violence or sexual harassment. Nor should a victim ever be made to feel ashamed for making a report.

If staff have a concern about a child or a child makes a report to them, they should follow the referral process. As is always the case, if staff are in any doubt as to what to do, they should speak to the designated safeguarding lead (or a deputy).

Mental Health: All staff should also be aware that mental health problems can, in some cases, be an indicator that a child has suffered or is at risk of suffering abuse, neglect or exploitation. Only appropriately trained professionals should attempt to make a diagnosis of a mental health problem. Staff are well placed to observe children day-to-day and identify those whose behaviour suggests that they may be experiencing a mental health problem or be at risk of developing one. Where children have suffered abuse and neglect, or other potentially traumatic adverse childhood experiences, this can have a lasting impact throughout childhood, adolescence and into adulthood. It is key that staff are aware of how these children’s experiences, can impact on their mental health, behaviour and education.

If staff have a mental health concern about a child that is also a safeguarding concern, immediate action should be taken, following their child protection policy and speaking to the designated safeguarding lead or a deputy.

Reference should be made to:

Mental Health and Behaviour in schools DfE guidance (November 2018);

DfE guidance ‘promoting and supporting mental health and wellbeing in schools, which details numerous resources available to schools; and

Public Health England: Promoting children and young people’s emotional health and wellbeing a whole-school and college approach

Paragraphs 183-185 of ‘Keeping Children Safe in Education’ (DfE, 2023)



SURBITON

HIGH SCHOOL

The School's Mental Health Policy outlines further detail on the systems and processes in place for identifying mental health problems, routes to escalate and how the School manages such concerns.

Modern Slavery and the National Referral Mechanism

Modern slavery encompasses human trafficking and slavery, servitude and forced or compulsory labour. Exploitation can take many forms, including sexual exploitation, forced labour, slavery, servitude, forced criminality and the removal of organs.

Further information on the signs that someone may be a victim of modern slavery, the support available to victims and how to refer them to the NRM is available in the Modern Slavery Statutory Guidance. Modern slavery: how to identify and support victims - GOV.UK (www.gov.uk)

Cybercrime

Cybercrime is criminal activity committed using computers and/or the internet. It is broadly categorised as either 'cyber-enabled' (crimes that can happen off-line but are enabled at scale and at speed on-line) or 'cyber dependent' (crimes that can be committed only by using a computer).

Cyber-dependent crimes include;

- unauthorised access to computers (illegal 'hacking'), for example accessing a school's computer network to look for test paper answers or change grades awarded;
- denial of Service (Dos or DDoS) attacks or 'booting'. These are attempts to make a computer, network or website unavailable by overwhelming it with internet traffic from multiple sources; and,
- making, supplying or obtaining malware (malicious software) such as viruses, spyware, ransomware, botnets and Remote Access Trojans with the intent to commit further offence, including those above.





Children with particular skill and interest in computing and technology may inadvertently or deliberately stray into cyber-dependent crime.

If there are concerns about a child in this area, the designated safeguarding lead (or a deputy), should consider referring into the **Cyber Choices** programme. This is a nationwide police programme supported by the Home Office and led by the National Crime Agency, working with regional and local policing. It aims to intervene where young people are at risk of committing, or being drawn into, low level cyber-dependent offences and divert them to a more positive use of their skills and interests.

Note that **Cyber Choices** does not currently cover 'cyber-enabled' crime such as fraud, purchasing of illegal drugs on-line and child sexual abuse and exploitation, nor other areas of concern such as on-line bullying or general on-line safety.

Additional advice can be found at: Cyber Choices, 'NPCC- When to call the Police' and National Cyber Security Centre - NCSC.GOV.UK

Appendix 2 – Meet the safeguarding team

			
Jon Owen	Sinead Ross-Martyn	Stuart Murphy	Garnette Watts
Designated Safeguarding Lead	Designated Safeguarding Lead	Deputy Designated Safeguarding Lead	Assistant Designated Safeguarding Lead

Jon Owen – Assistant Principal / Director of Sixth Form (Deputy Safeguarding Lead)

Jon.owen@surbitonhigh.com; (internal 450)

Stuart Murphy – Assistant Principal Pupil Development and Well-being

Stuart.murphy@surbitonhigh.com (Internal 306)


Garnette Watts – Head of Psychology

Garnette.watts@surbitonhigh.com;

Sinead Ross-Martyn – Senior Nurse

Sinead.RossMartyn@surbitonhigh.com

Girls' Prep School Safeguarding Team

			
Jon Owen	Sinead Ross-Martyn	Louise McCabe-Arnold	David Williams
Designated Safeguarding Lead	Designated Safeguarding Lead	Assistant Designated Safeguarding Lead	Designated Safeguarding Lead Girls' Prep

Louise McCabe-Arnold – Head of Girls' Prep

Louise.mccabe-arnold@surbitonhigh.com (Internal 305)

David Williams – Deputy Head Girls' Prep

David.williams@surbitonhigh.com; (Internal 398)

Rosanna Palmer – Acting Leader of Pre-Prep Girls' Prep

Rosanna.palmer@surbitonhigh.com

Boys' Prep Safeguarding Team

			
Jon Owen	Sinead Ross-Martyn	Tracey Chong	Sally Johnston
Designated Safeguarding Lead	Designated Safeguarding Lead	Assistant Designated Safeguarding Lead	Designated Safeguarding Lead Boys' Prep

Tracey Chong – Head of Boys' Prep (Boys' Prep EYFS Safeguarding Co-ordinator)

tracey.chong@surbitonhigh.com; (Internal 404)

Sally Johnston – Deputy Head Boys' Prep

Sally.johnston@surbitonhigh.com (Internal 304)

The Safeguarding Team is appropriately trained and will take the lead on all Safeguarding Issues. In addition to this team there are other members of staff trained to Level 3.

Appendix 3 – Safeguarding training log

Role	Staff responsible	Name of course	Date completed	Date of renewal
Designated Safeguarding Lead	Jon Owen (Assistant Principal)	LSCB Safeguarding Children: Level 3	21/9/2021	21/9/2023
		HM Government Prevent e-learning training course	19/8/2016	N/A
Designated Safeguarding Lead	Sinead Ross-Martyn (Senior Nurse)	LSCB Safeguarding Children: Level 3	16/11/22	16/11/24
		HM Government Prevent e-learning training course	12/2021	
Child Protection ADSL	Tracey Chong (Head, Boys' Preparatory School)	LSCB Safeguarding Children: Level 3	21/11/2022	21/11/2024
Designated Safeguarding Lead Boys' Prep	Sally Johnston (Deputy Head Boys' Preparatory School)	LSCB Safeguarding Children: Level 3	10/05/2021	10/05/2023
Deputy Designated Safeguarding Lead	Stuart Murphy (Assistant Principal)	LSCB Safeguarding Children: Level 3	9/11/2021	9/11/2023
Child Protection ADSL	Garnette Watts (Head of Psychology)	LSCB Safeguarding Children: Level 3	21/9/2021	21/9/2023

Designated Safeguarding Lead Girls' Prep	David Williams (Deputy Head Girls' Prep)	LSCB Safeguarding Children: Level 3	7/12/2022	7/12/2024
Child Protection ADSL	Louise McCabe-Arnold (Head Girls' Prep)	LSCB Safeguarding Children: Level 3	18/11/2021	18/11/2023
Child Protection ADSL	Rosanna Palmer (Acting Head of Pre-prep Girls' Prep)	LSCB Safeguarding Children: Level 3	15/11/2022	15/11/2024

APPENDIX 3a – Safeguarding Training

Safeguarding Training Log – Academic Year		
Attendees	Type of training provided	Frequency of training
Principal/Head	KRSCP Safeguarding Children: Child Protection Process Level 3 Prevent Training Safer Recruitment Training	Every 2 years Upon employment Every 3 years
DSL	KRSCP Safeguarding Children: Child Protection Process Level 3 Channel General Awareness Prevent Training Level 2 Train the trainer Kingston Safeguarding Partner conference and forums Safer Recruitment Training	Every 2 years Upon employment Sept 2018 At least Yearly or as organised Every 3 years
Child Protection Deputy DDSL & ADSL	KRSCP Safeguarding Children: Child Protection Process Level 3 Prevent Training Level 2 Train the trainer* (as appropriate)	Every 2 years Upon employment Every 3 years
Senior Leadership Team	Minimum: eLearning: KRSCP Safeguarding Training: Basic Awareness Level Prevent Training Safer Recruitment Training	Yearly or as appropriate Upon Employment or Sept 2017 Every 3 years

Pastoral Leads	Minimum: KRSCP Safeguarding Children: A Shared Responsibility Level 2 Prevent Training	Every 2 years
Whole School	Level 1 – Level 3 as appropriate Regular update and refresher training Prevent Training	Every 2 years
e-safety Lead	Level 3 eLearning: Safeguarding Training: Basic Awareness Level 1	Every 2 years (Jan 2020)
P.E. staff	Level 1 – Level 3 as appropriate First Aid	Every 2 years
Medical Needs Officer	KRSCP Safeguarding Children: Child Protection Process Level 3 Prevent Training	Every 2 years
Chair of Governors of LGB	Level 1 & Regular updates United Learning Safeguarding for Governors	Every 2 years As appropriate
Nominated Safeguarding Governor of LGB	Minimum: eLearning: KRSCP Safeguarding Training: Basic Awareness Level United Learning Safeguarding for Governors	Every 2 years As appropriate
Local Governing Body (whole board)	Minimum: eLearning: KRSCP Safeguarding Training: Basic Awareness Level	Upon appointment
Agency Staff /Peripatetic	Minimum: eLearning: KRSCP Safeguarding Training: Basic Awareness Level Formal induction with DSL	Upon appointment
Volunteers	Minimum: eLearning: KRSCP Safeguarding Training: Basic Awareness Level Formal induction with DSL	Upon appointment

Appendix 4 – Staff/student relationship letter and guidance notes

Surbiton High School

United Learning

Dear Colleague,

September 2023

Every one of us working within United Learning, whatever our role, is acutely aware that the protection of children is of the highest possible importance. Trust underpins everything that we do in schools. The parents of our pupils entrust the care of their children to us and together we are all responsible for their wellbeing. United Learning also has a responsibility to ensure that those working in our schools are themselves protected - against putting themselves in a vulnerable position and against the possibility of false accusation.

This letter has also been prompted by the isolated actions of a small number of employees who have acted improperly or who have found/put themselves in a vulnerable position. The focus on appropriate use of social media remains a priority for us. Instances where inappropriate usage has been identified has led to disciplinary action including in the most serious cases dismissal for gross misconduct. I am writing to every person employed by United Learning to remind us all just how serious these matters are, but also to offer some advice as to how to respond in potentially difficult situations.

Headteachers will discuss this issue with their staff at appropriate times during the school year. This letter reinforces those statements and ensures that no-one associated with our schools is in any doubt that child protection is an issue that must be treated with the utmost seriousness. Acts of child abuse may be blatant and incontrovertible. However, they may also be more subtle. It is important that low level concerns are properly identified, reported and addressed. This supports a strong safeguarding culture which protects pupils and staff.

It must be understood that the following are almost always inappropriate within the professional context of schools and can easily be construed as child abuse in some circumstances:

- touching and physical contact, other than for staff working with very young children in primary or nursery settings, where it is expected that they will have necessary physical contact and display affection to properly fulfil their role to nurture, support and care for those children;
- contact through electronic or digital communications using personal accounts.

Against this background, we must ensure that no situation could arise which is or could reasonably be construed as acting against the safety of each child. This is not always an easy line to draw but crossing that line, or being in a position where it appears that the line has been crossed, is unacceptable. Some adults within the school undertake roles where this is even more important because of the ease with which the proper execution of their duties might be misinterpreted or because the vulnerability of the young people in their care might be more easily exploited. These might include those:

- working in boarding houses or residential situations, including, for example, school trips and excursions;
- whose work requires them to interact in a one to one situation, particularly when that work takes place behind closed doors as is often the case with peripatetic music lessons;
- whose work by its nature requires some physical contact with children, for example, those working with very young children and those involved in the coaching of sport or other practical subjects where a correct technique may need to be demonstrated;
- who have high levels of access to ICT systems and, indeed, all who use the internet, email, text messaging and other forms of electronic communication;
- young employees and workers whose duties require them to work with older pupils (e.g. sixth formers) where the age differential is quite small;
- who work with especially vulnerable children for example those with special educational needs, disabilities, mental illness or those that require intimate care.

Within each school, Headteachers will issue both verbal and written guidance from time to time and will make available appropriate training to help everyone deal with this difficult issue. A statement of guidance follows this letter. The DfE has published updated guidance for all schools on their duties to safeguard and promote the wellbeing of children, [Keeping children safe in education - GOV.UK \(www.gov.uk\)](https://www.gov.uk/government/uploads/system/uploads/attachment_data/file/616226/Keeping-children-safe-in-education-2016.pdf). It is important that you are familiar with this guidance and, as a statutory minimum, have read and can demonstrate your understanding of your responsibilities in relation to Keeping Children Safe in Education Part 1 and Part B.

Finally, having said all this, it is still important for all of us to retain an appropriate balance. United Learning greatly appreciates the devotion and commitment of all of you who work in our schools. We know that your work is effective because every day you respect and care for children, enjoy their company and celebrate their achievements. The trust placed in us as we guide young people through their formative years is huge; we all need to help each other shoulder this responsibility to the very best of our ability. Thank you again for all you have done and continue to do for children and young people through what has been a particularly difficult couple of years.

Yours sincerely

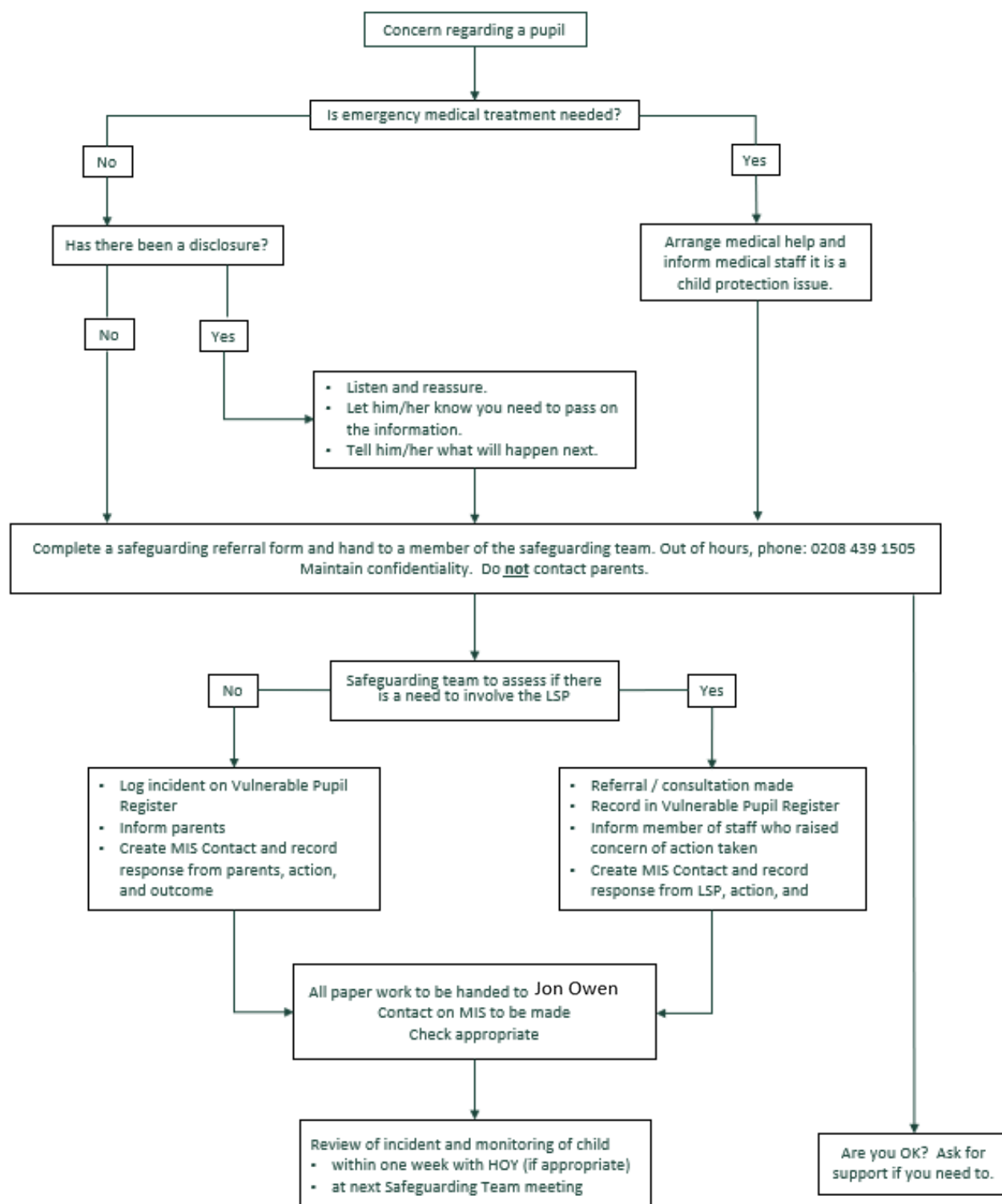
A handwritten signature in black ink, appearing to read 'J. A. Coles'.

Sir Jon Coles
Chief Executive
United Learning

A handwritten signature in black ink, appearing to read 'Rebecca Glover'.

Rebecca Glover
Principal
Surbiton High School

Appendix 5 – Flowchart for reporting a concern



Appendix 6 – Working Together to Safeguard Children (HM Government, 2023)

Issued February 2024

This Department for Education (DfE) statutory guidance sets out what organisations and agencies who have functions relating to children must and should do to help, protect and promote the welfare of all children and young people under the age of 18 in England.

This new edition of Working Together is central to delivering on the strategy set out in Stable Homes, Built on Love (2023), which outlines the Government's commitment to support every child to grow up in a safe, stable and loving home.

Changes/additions to definition of Safeguarding

Safeguarding and promoting the welfare of children is defined for the purposes of this guidance as:

- *providing help and support to meet the needs of children as soon as problems emerge*
- *protecting children from maltreatment, whether that is within or outside the home, including online*
- *preventing impairment of children's mental and physical health or development*
- *ensuring that children grow up in circumstances consistent with the provision of safe and effective care*
- *promoting the upbringing of children with their birth parents, or otherwise their family network through a kinship care arrangement, whenever possible, and where this is in the best interests of the children*
- *taking action to enable all children to have the best outcomes in line with the outcomes set out in the Children's Social Care National Framework.*

Child protection is part of safeguarding and promoting the welfare of children and is defined for the purpose of this guidance as activity that is undertaken to protect specific children who are suspected to be suffering, or likely to suffer, significant harm. This includes harm that occurs inside or outside the home, including online. Effective safeguarding means practitioners should understand and be sensitive to factors, including economic and social circumstances and ethnicity, which can impact children and families' lives.

Suitable Education

All children aged 5 to 16 are legally entitled to a full-time education, suitable to any special educational need. Education is essential for children's progress, wellbeing and wider development and being in school is a protective factor against wider harms, including exploitation. Where children are not receiving education, either because they persistently missing school, or are not registered at a school and not receiving a suitable education otherwise, this could be a possible indicator of neglect, abuse or exploitation or could in itself constitute neglect in severe and sustained cases.

It is important that relevant information where children are home educated is shared between local authorities, schools, colleges, and other relevant partners. Parents have a right to educate their children at home providing the education is suitable. When a child of school age is not a registered pupil at a school and is not receiving suitable education at home, this could be an indicator of neglect, abuse, or exploitation. Schools must notify the local authority of a child's removal from the school roll at a non-standard transition point, and they should also share information on a child's circumstances, especially if already known to children's social care or if they have an EHC plan.

Multi-agency safeguarding arrangements

Local Safeguarding Children Partnerships should create an environment which enables all schools (including independent schools and academy trusts), colleges, early years, and other education and childcare providers in the local area to be fully engaged, involved and included in local safeguarding arrangements. This means making sure that the views and contributions of education and childcare providers are articulated at the highest level of decision-making. Although it may be challenging for a single education or childcare leader to speak on behalf of all local providers, LSPs should have an education representative at strategic discussions representing the education sector. These local leaders will bring insights on the experiences of children locally, and on how arrangements impact on the education and childcare system.

Education providers, including multi-academy trusts, have a responsibility to play their full part in local safeguarding arrangements, including where their footprint extends across several local authority areas. This includes, but should not be limited to, responding to safeguarding audits of quality and compliance, as requested by the local authority and/or local safeguarding partners. This is to ensure that policies are consistent with the local multi-agency safeguarding arrangements and relevant legislation and/or regulations. They should also provide staff and governor training that meets local and national safeguarding requirements. Education providers where required should report their audits to their governing bodies and proprietors to be shared as requested by the LSPs. Training for designated safeguarding leads and designated teachers should include shared understanding about different levels of need and how these need to be responded to.

Providing help, support and protection

This area is broken down into 3 sections:

- Early help
- Safeguarding and promoting the welfare of children
- Child protection

Working with parents and carers

The updated guidance sets out four principles that professionals should follow when working with parents and carers:

- *effective partnership and the importance of building strong, positive, trusting and co-operative relationships*
- *respectful, non-blaming, clear and inclusive verbal and non-verbal communication that is adapted to the needs of parents and carers*

- *empowering parents and carers to participate in decision making by equipping them with information, keeping them updated and directing them to further resources*
- *involving parents and carers in the design of processes and services that affect them*

Harm outside the home

- Practitioners should consider the needs, experiences and vulnerabilities of the individuals or groups who are experiencing, or are at risk of experiencing, harm outside the home – including from criminal exploitation, sexual exploitation or serious violence.
- Practitioners should work with relevant partner agencies to consider the influence of groups or individuals perpetrating the harm.
- Professionals should assess whether a child who is experiencing, or is at risk of experiencing, harm outside the home is in need under section 17 or 47 of the Children Act 1989